

VOR/DME AIR	APP CRS	Rwy Idg	3805
117.1	229°	TDZE	1197
Chan 118		Apt Elev	1197

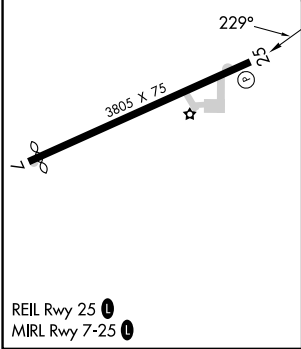
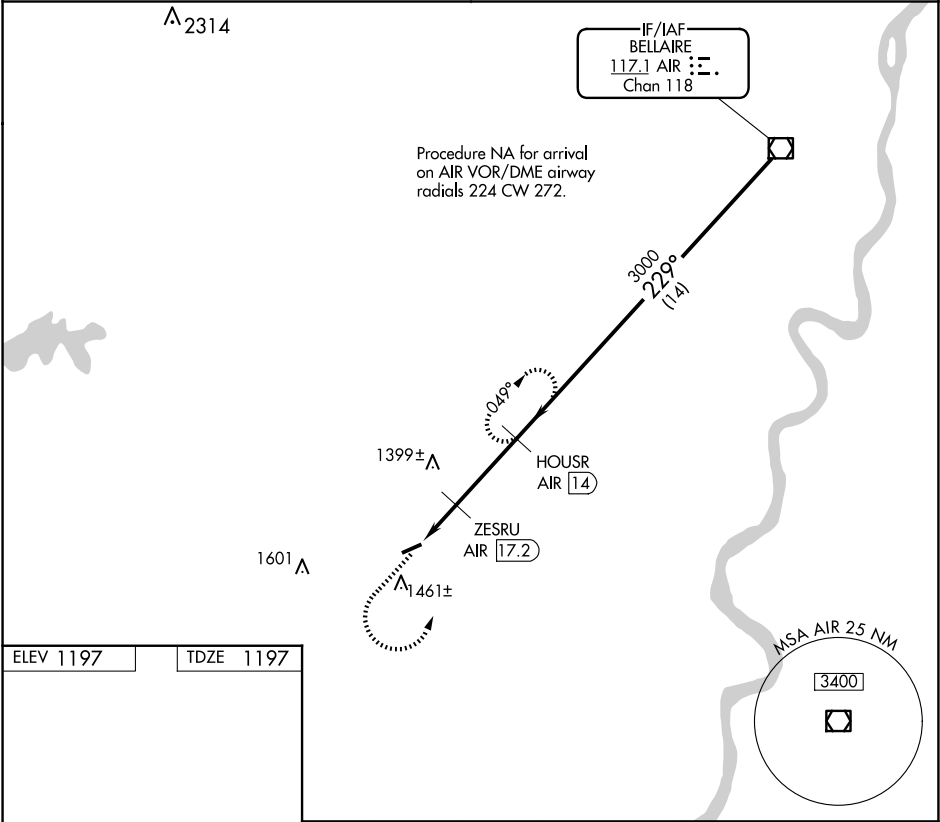
VOR/DME RWY 25
MONROE COUNTY (4G5)

▼ Use Wheeling Ohio Co, WV alimeter setting; when not received use Parkersburg, WV alimeter setting and increase all MDA 60 feet; increase S-25 Cat C visibility 1/8 mile and Circling Cat C visibility 1/4 mile. Procedure NA at night. Rwy 25 helicopter visibility reduction below 1 SM NA.

▲ NA

MISSED APPROACH: Climb to 3000 then left turn on AIR VOR/DME R-229 to HOUSR/AIR 14 DME and hold.

CLEVELAND CENTER 126.95 239.3	UNICOM 122.8 (CTAF) 0
----------------------------------	--------------------------



3000	AIR R-229	HOUSR AIR 14	VGSI and descent angles not coincident (VGSI Angle 3.00/TCH 40).	
			HOUSR AIR 14	AIR VOR/DME
	ZESRU AIR 19.1	ZESRU AIR 17.2	3000	3000
	3.35° TCH 40		229°	229°
	1920			
	1.9 NM	3.2 NM	1.4 NM	
CATEGORY	A	B	C	D
S-25	1740-1	543 (600-1)	1740-1 5/8 543 (600-1 5/8)	NA
C CIRCLING	1860-1	663 (700-1)	1860-1 3/4 663 (700-1 3/4)	NA

EC-2, 10 JUL 2025 to 07 AUG 2025

EC-2, 10 JUL 2025 to 07 AUG 2025