

RNP APCH.

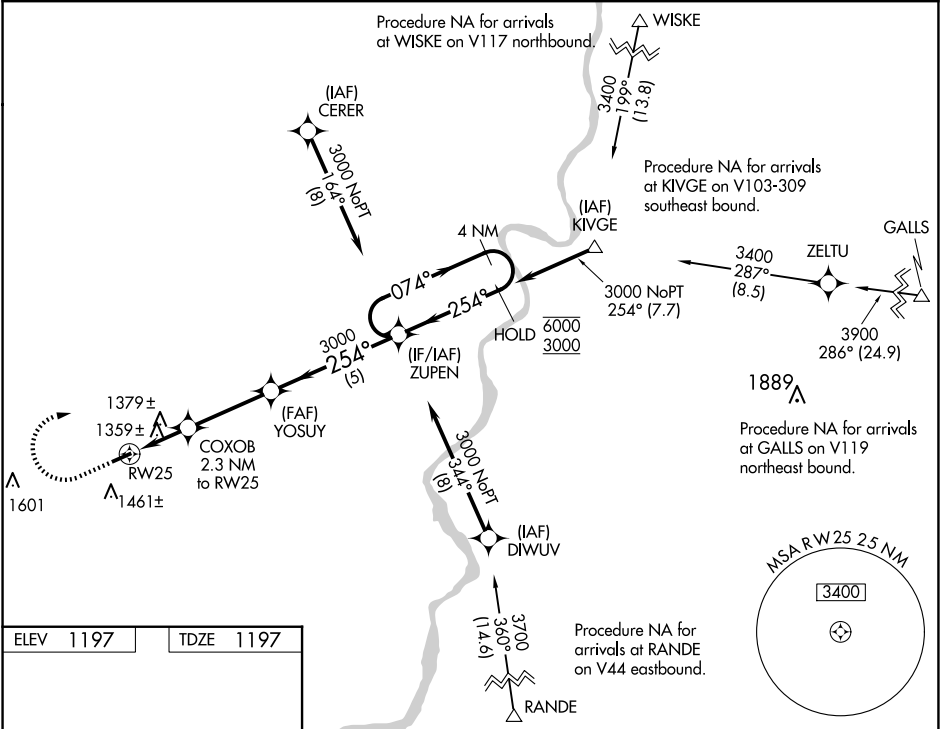
NA

Rwy 25 helicopter visibility reduction below 1 SM NA. Use Wheeling Ohio Co, WV altimeter setting; when not received use Parkersburg, WV altimeter setting and increase all MDA 60 feet; increase LP Cat C, LNAV Cat C and Circling Cat C visibility ¼ SM. Procedure NA at night.

MISSED APPROACH: Climb to 1900 then climbing right turn to 3000 direct ZUPEN and hold.

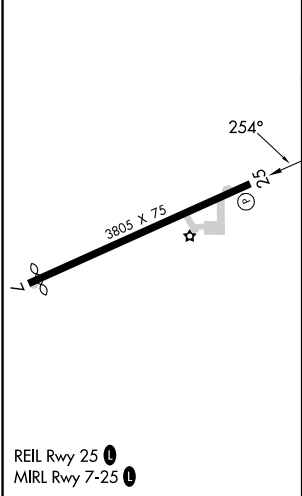
CLEVELAND CENTER
126.95 239.3

UNICOM
122.8 (CTAF) 0



ELEV 1197

TDZE 1197



Visual Segment - Obstacles.				
4 NM Holding Pattern				
<div><div><div>1900</div><div>3000</div><div>ZUPEN</div></div><div><div>COXOB 2.3 NM to RW25</div><div>1960</div><div>3000</div><div>254°</div><div>074°</div><div>6000</div><div>3000</div></div><div><div>2.3 NM</div><div>3.3 NM</div><div>5 NM</div></div></div>				
CATEGORY	A	B	C	D
LP MDA	1700-1	503 (600-1)	1700-1 ³ / ₈ 503 (600-1 ³ / ₈)	NA
LNAV MDA	1720-1	523 (600-1)	1720-1 ¹ / ₂ 523 (600-1 ¹ / ₂)	NA
CIRCLING	1860-1	663 (700-1)	1860-1 ³ / ₄ 663 (700-1 ³ / ₄)	NA