

WAAS CH <b>56513</b> <b>W04A</b>	APP CRS <b>042°</b>	Rwy Idg TDZE Apt Elev	<b>7099</b> <b>158</b> <b>158</b>
--	------------------------	-----------------------------	---

## RNAV (GPS) RWY 4

ROCKY MOUNT/WILSON RGNL (RWI)

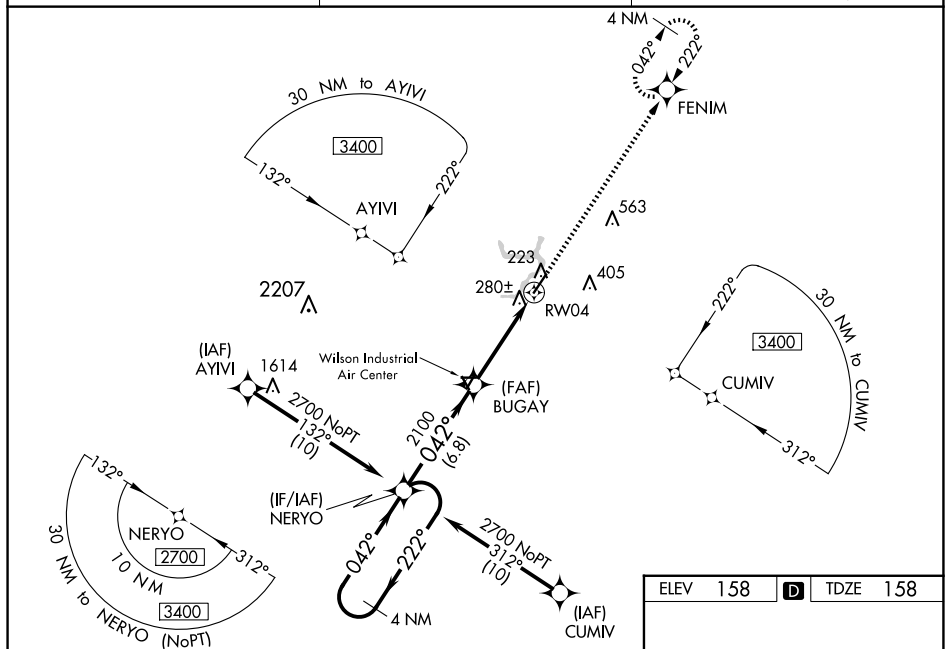
- ⚠** Inop table does not apply to LPV when using local altimeter setting. For uncompensated Baro-VNAV systems, LNAV/VNAV NA below -10°C (14°F) or above 54°C (130°F).  
**⚠** When local altimeter setting not received, use Wayne Exec Jport altimeter setting and increase LPV DA to 467; increase LNAV/VNAV DA to 601 and all Cots visibility ¼ mile; increase all MDA 60 feet and LNAV Cots C/D and Circling Cat C visibility ¼ mile.  
 For inop MALSR, increase LNAV Cat A/B visibility to 1 mile. DME/DME RNP-0.3 NA.  
 Baro-VNAV and VDP NA when using Wayne Exec Jport altimeter setting.  
 Rwy 4 helicopter visibility reduction below ¼ SM NA.

MALSR



**MISSED APPROACH:**  
Climb to 2500 direct  
FENIM and hold.

ASOS <b>118.875</b>	WASHINGTON CENTER <b>123.85 279.65</b>	UNICOM <b>123.05 (CTAF) 0</b>
------------------------	---	----------------------------------



SE-2, 10 JUL 2025 to 07 AUG 2025

ELEV	158	<b>D</b>	TDZE	158
------	-----	----------	------	-----

4 NM Holding Pattern

VGSB and RNAV glidepath not coincident (VGSB Angle 3.00/TCH 41).

2500

FENIM

2700

222°

042°

042°

2100

2100

\*1.1 NM to RW04

\*RNAV only

RW04

GP 3.00° TCH 56

CATEGORY		A	B	C	D
LPV	DA		408- <sup>3</sup> / <sub>4</sub>	250 (300- <sup>3</sup> / <sub>4</sub> )	
INAV/ VNAV	DA		542- <sup>3</sup> / <sub>4</sub>	384 (400- <sup>3</sup> / <sub>4</sub> )	
INAV	MDA		560- <sup>3</sup> / <sub>4</sub>	402 (500- <sup>3</sup> / <sub>4</sub> )	
<b>C</b> CIRCLING		600-1 442 (500-1)	620-1 462 (500-1)	720-1½ 562 (600-1½)	760-2 602 (700-2)

