

WAAS CH <b>40116</b> <b>W15A</b>	APP CRS <b>154°</b>	Rwy Idg <b>4000</b> TDZE <b>928</b> Apt Elev <b>928</b>
--	------------------------	---

RNAV (GPS) RWY 15

KNOXVILLE MUNI (OXV)

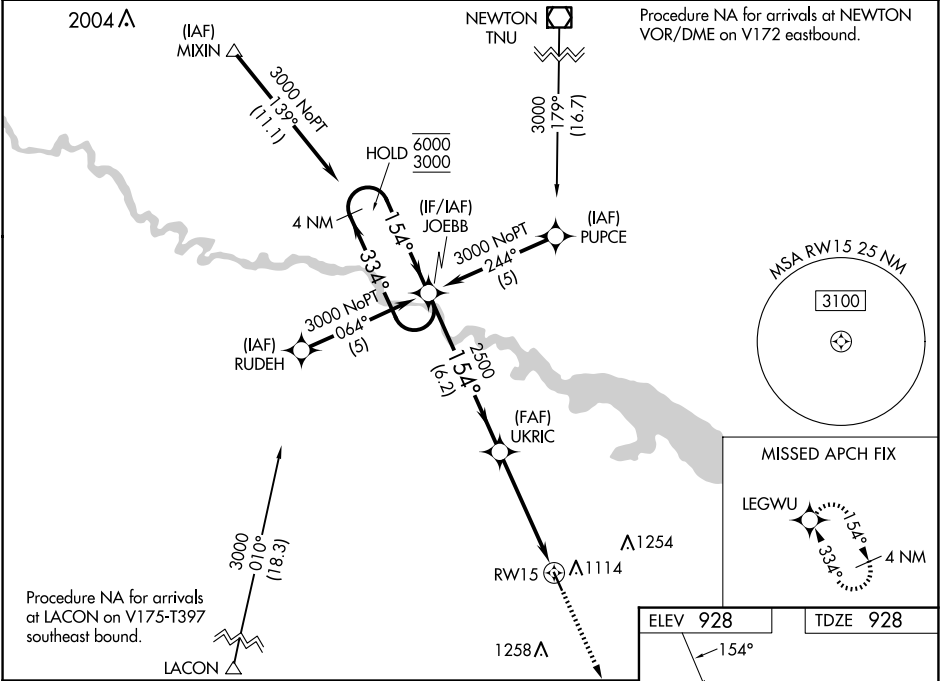
RNP APCH - GPS.

⚠

For uncompensated Baro-VNAV systems, LNAV/VNAV NA below -16°C or above 54°C.  
Baro-VNAV and VDP NA when using PEA altimeter setting. When local altimeter setting not received, use PEA altimeter setting; increase LPV DA to 1271 feet; increase LNAV/VNAV DA to 1389 feet and all visibilities 1/8 SM; increase all MDAs 40 feet.

MISSED APPROACH: Climb to 2700 direct LEGWU and hold.

AWOS-3 <b>119.775</b>	DES MOINES APP CON <b>123.9 307.15</b>	UNICOM <b>122.8</b> (CTAF) <b>0</b>
--------------------------	---	--



VGSI and RNAV glidepath not coincident (VGSI Angle 3.00/TCH 32).				
4 NM Holding Pattern				
6000 ← 334°				
3000 → 154°				
GP 3.00°				
TCH 40				
6.2 NM				
3.5 NM				
1.3 NM				
CATEGORY	A	B	C	D
LPV DA	1242-1	314 (400-1)	NA	
LNAV/VNAV DA	1360-1 1/4	432 (500-1 1/4)	NA	
LNAV MDA	1360-1	432 (500-1)	NA	
CIRCLING	1480-1	552 (600-1)	NA	

