

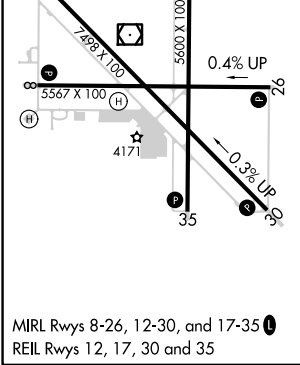
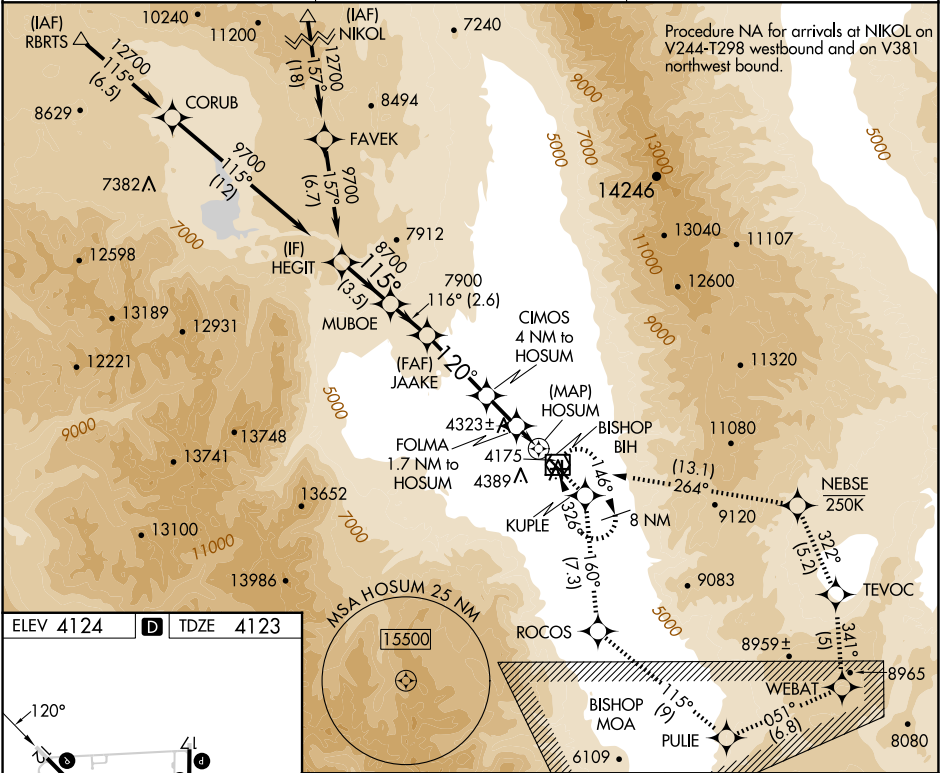
APP CRS	Rwy ldg	7098
120°	TDZE	4123
	Apt Elev	4124

RNAV (GPS) Z RWY 12

BISHOP (BIH)

RNP APCH-GPS.	MISSED APPROACH: (Do not exceed 250 KIAS until NEBSE) Climb to 13000 direct KUPLE and on track 160° to ROCOS and on track 115° to PUJIE and on track 051° to WEBAT and on track 341° to TEVOC and on track 322° to NEBSE and on track 264° to BIH VOR/DME and hold.
▼ Rwy 12, helicopter visibility reduction below ¾ SM NA. Missed approach requires minimum climb of 325 feet per NM to 11000; if unable, see RNAV (GPS) Y RWY 12.	

ASOS 119.025	OAKLAND CENTER 125.75 284.65	UNICOM 123.0 (CTAF) 0
------------------------	--	---------------------------------



HEGIT	Visual Segment - Obstacles.	13000	KUPLE	tr 160°	ROCOS
MUBOE	JAAKE	9700	8700	7900	6200
7900	115°	116°	120°	6200	5200
3.5 NM	2.6 NM	4.5 NM	2.3 NM	1.7 NM	1 NM
CATEGORY	A	B	C	D	
LNAV MDA	4580-1¼	457 (500-1¼)		NA	
CIRCLING	6420-1¼ 2296 (2300-1¼)	6420-1½ 2296 (2300-1½)	6420-3 2296 (2300-3)	NA	

SW-2, 10 JUL 2025 to 07 AUG 2025

SW-2, 10 JUL 2025 to 07 AUG 2025