

APP CRS	Rwy Idg	<b>7098</b>
<b>120°</b>	TDZE	<b>4123</b>
	Apt Elev	<b>4124</b>

RNAV (GPS) Y RWY 12  
BISHOP (BIH)

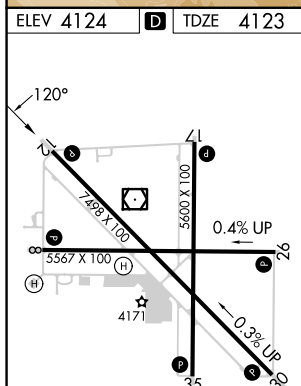
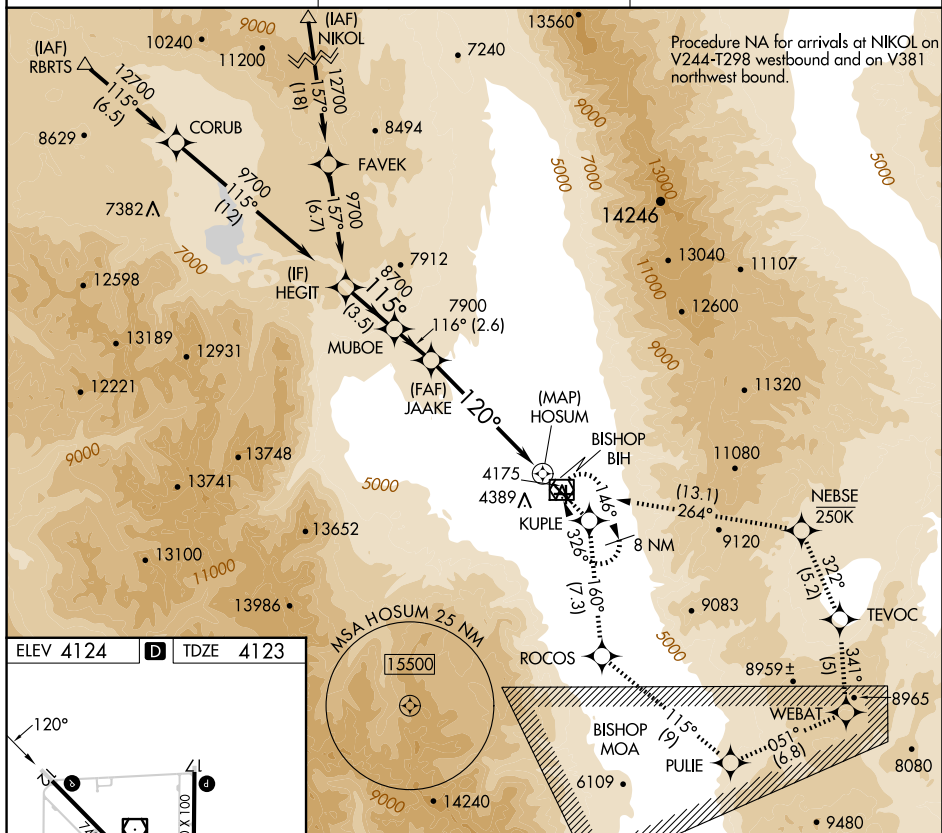
RNP APCH-GPS.

**T** Rwy 12, helicopter visibility reduction  
**A** below  $\frac{3}{4}$  SM NA.

**MISSED APPROACH:** (Do not exceed 250 KIAS until NEBSE) Climb to 13000 direct KUPLE and on track 160° to ROCOS and on track 115° to PULIE and on track 051° to WEBAT and on track 341° to TEVOC and on track 322° to NEBSE and on track 264° to BIH VOR/DME and hold.

ASOS  
119.025

OAKLAND CENTER  
125.75 284.65

UNICOM  
123.0 (CTAF) **L**

MIRL Rwy's 8-26, 12-30, and 17-35 **L**  
REIL Rwy's 12, 17, 30 and 35

BISHOP, CALIFORNIA

Orig-F 08SEP22

BISHOP (BIH)

37°22'N-118°22'W

RNAV (GPS) Y RWY 12

SW-2, 10 JUL 2025 to 07 AUG 2025

Visual Segment - Obstacles.				
<div> <div>HEGIT</div> <div>MUBOE</div> <div>JAAKE</div> <div>HOSUM</div> </div>		<div>13000</div> <div>↑</div>	<div>KUPLE</div> <div>✧</div>	<div>ROCOS</div> <div>✧</div>
<div> <div>9700</div> <div>115°</div> <div>8700</div> <div>116°</div> <div>7900</div> <div>120°</div> </div>		<div>tr 160°</div>		
<div>3.5 NM</div>		<div>2.6 NM</div>	<div>8.5 NM</div>	<div>1 NM</div>
CATEGORY	A	B	C	D
LNAV MDA	<div>6600-1¼</div> <div>2477 (2500-1¼)</div>	<div>6600-1½</div> <div>2477 (2500-1½)</div>	<div>6600-3</div> <div>2477 (2500-3)</div>	NA