

APP CRS
301°

Rwy Ldg
TDZE
4111

Apt Elev
4124

RNAV (RNP) RWY 30
BISHOP (BIH)

▼

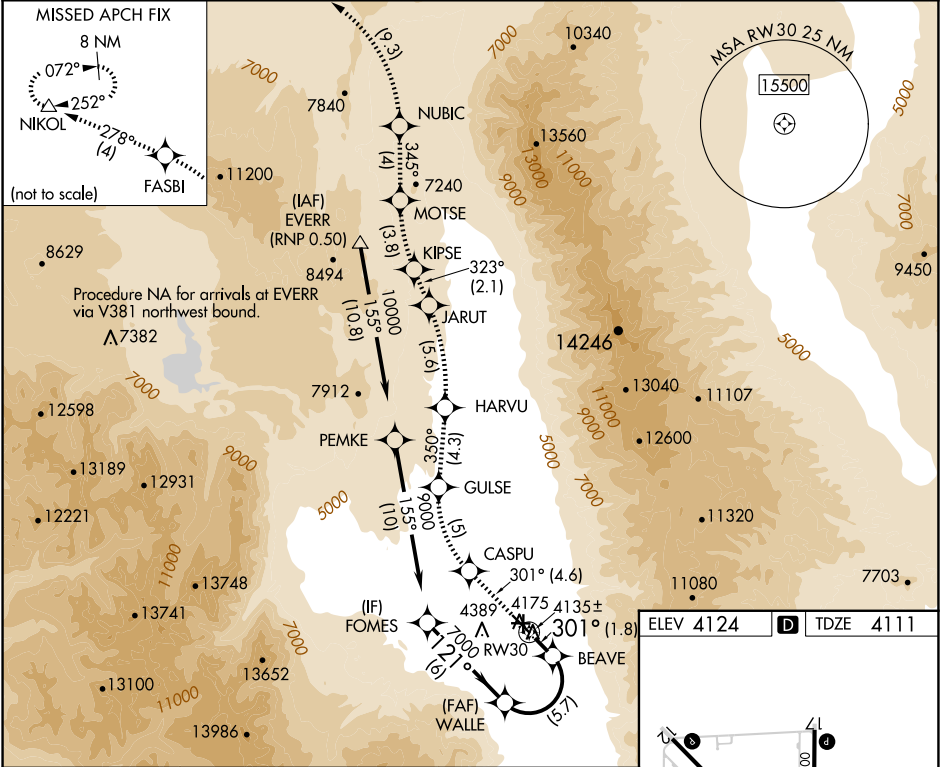
▲ NA

RNP AR APCH, RF required.

For uncompensated Baro-VNAV systems, procedure NA below -12°C or above 54°C.

MISSED APPROACH: Climb to 13000 via 301° track to CASPU, right turn to GULSE, 350° track to HARVU, left turn to JARUT, 323° track to KIPSE, right turn to MOTSE, 345° track to NUBIC, left turn to FASBI, 278° track to NIKOL and hold.

ASOS 119.025	OAKLAND CENTER 125.75 284.65	UNICOM 123.0 (CTAF) 0
-----------------	---------------------------------	--------------------------



13000

CASPU

GULSE

301° fr

Procedure Turn NA

WALLE

BEAVE

7000

9000

121°

301°

GP 3.52°

TCH 52°

1.8 NM

5.7 NM

6 NM

CATEGORY

RNP 0.30 DA

A

B

C

D

4476-1

365 (400-1)

NA

AUTHORIZATION REQUIRED

MIRL Rwy 8-26, 12-30, and 17-35 0

REIL Rwy 12, 17, 30 and 35