

BISHOP, CALIFORNIA

AL-5737 (FAA)

25051

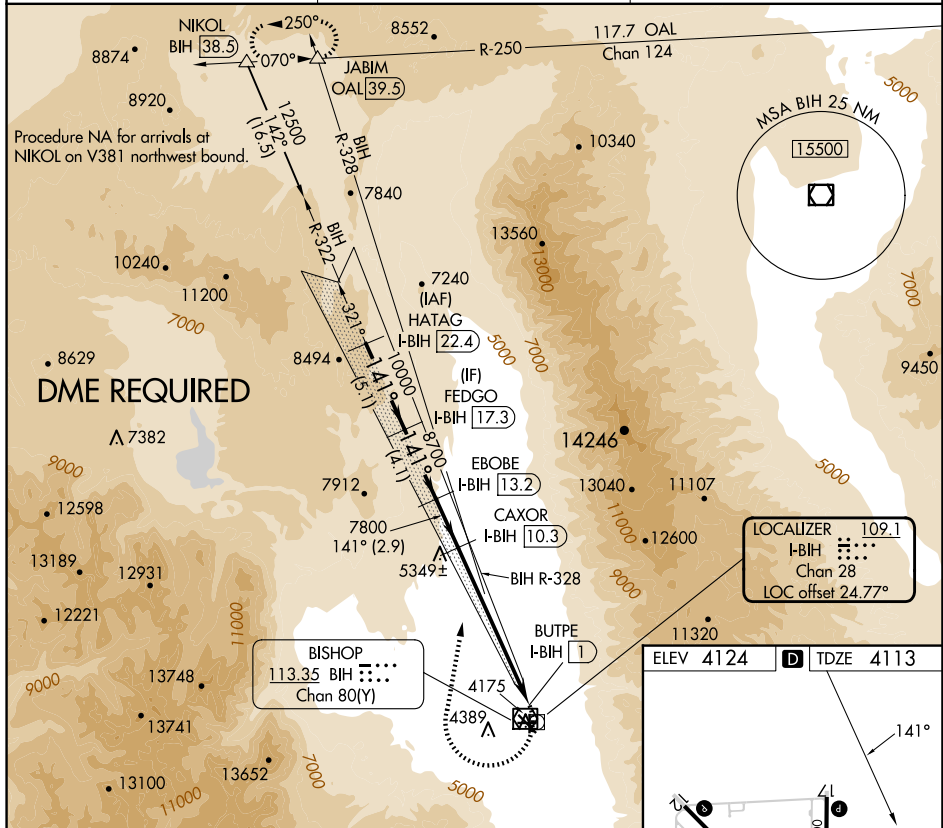
LOC/DME I-BIH <u>109.1</u> Chan 28	APP CRS 141°	Rwy Idg 5600 TDZE 4113 Apt Elev 4124
--	-----------------	--

LDA RWY 17
BISHOP (BIH)

DME required.

MISSED APPROACH: Climbing right turn to 12500 on heading 355° and on BIH VOR/DME R-328 to JABIM INT/OAL 39.5 DME and hold.

ASOS 119,025	OAKLAND CENTER 125.75 284.65	UNICOM 123.0 (CTAF) 0
------------------------	--	---------------------------------



VGSI and descent angles not coincident
(VGSI Angle 3.00/TCH 39).

HATAG
I-BIH (22.4)

FEDGO
I-BIH (17.3)

EOBOE
I-BIH (13.2)

CAXOR
I-BIH (10.3)

BUTPE
I-BIH (1)

12500

10000

8700

7800

6340-3

3.50°
TCH 50

5.1 NM

4.1 NM

2.9 NM

9.3 NM

0.5 NM

Use I-BIH DME when on the
localizer course.

CATEGORY	A	B	C	D
S-17	6340-1½ 2227 (2300-1½)	6340-1½ 2227 (2300-1½)	6340-3	2227 (2300-3)

BISHOP, CALIFORNIA
Orig-D 15AUG19

37°22'N-118°22'W

BISHOP (BIH)
LDA RWY 17