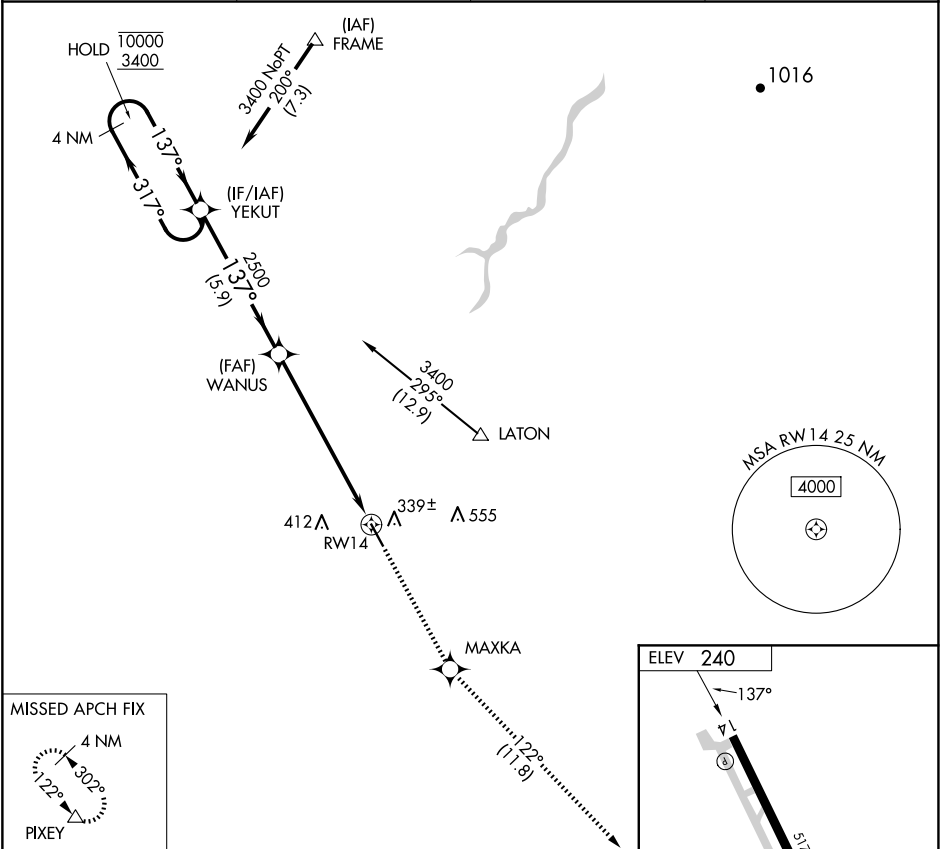


APP CRS
137°

Rwy Ldg
TDZE
Apt Elev
N/A
N/A
240

RNAV (GPS)-B
HANFORD MUNI (HJO)

RNP APCH: Circling Rwy 14 NA at night.		MISSED APPROACH: Climb to 3100 direct MAXKA and on track 122° to PIXEY and hold.	
ASOS 134.75	FRESNO APP CON 123.9	CLNC DEL 123.9	UNICOM 122.8 (CTAF) 0



MISSED APCH FIX
PIXEY
4 NM
122°
302°

4 NM Holding Pattern
YEKUT
10000
3400
317°
137°
WANUS
2500
3.00°
TCH 45
RW14
5.9 NM
7 NM

3100
MAXKA
tr 122°
PIXEY

CATEGORY	A	B	C	D
C CIRCLING	760-1 520 (600-1)	760-1½ 520 (600-1½)	NA	

ELEV 240
137°
RW14
32

REIL Rwy 32 **0**
MIRL Rwy 14-32 **0**

HANFORD, CALIFORNIA
Amdt 1 15AUG19

36°19'N-119°38'W

HANFORD MUNI (HJO)
RNAV (GPS)-B