

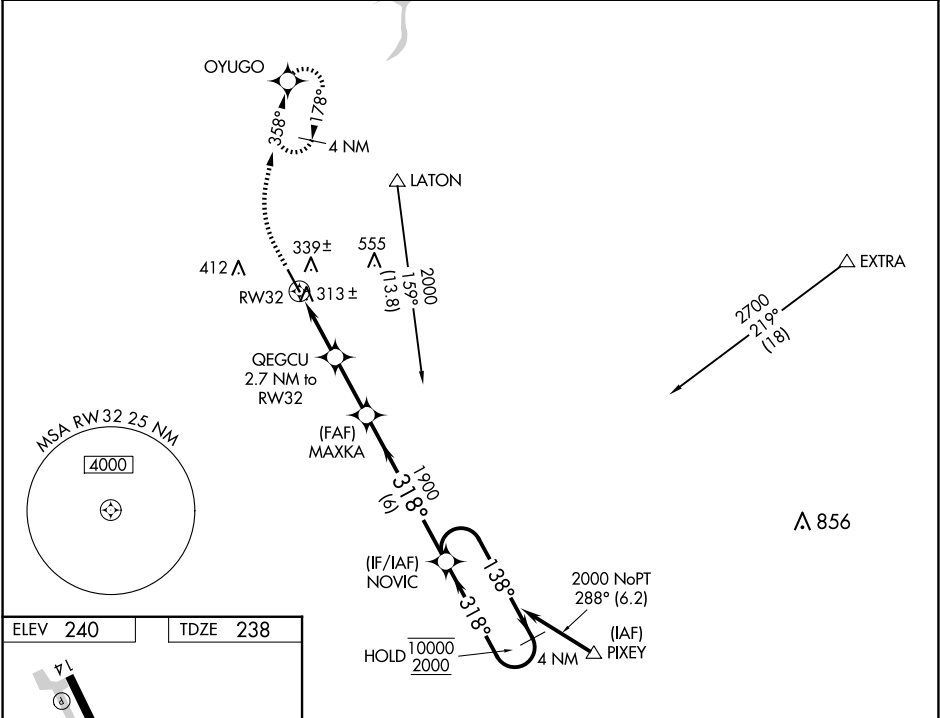
WAAS CH 70344 W32A	APP CRS 318°	Rwy Ldg TDZE Apt Elev	5179 238 240
--	------------------------	-----------------------------	---

RNAV (GPS) RWY 32

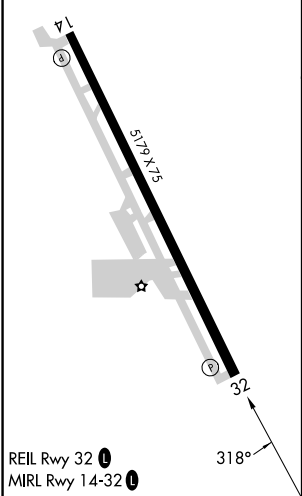
HANFORD MUNI (HJO)

RNP APCH.	MISSED APPROACH: Climb to 700 then climbing right turn to 2000 direct OYUGO and hold, continue climb-in-hold to 2000.
▼ Rwy 32 helicopter visibility reduction below ¾ SM NA. For uncompensated Baro-VNAV systems, LNAV/VNAV NA below -3°C or above 54°C.	

ASOS 134.75	FRESNO APP CON 123.9	CLNC DEL 123.9	UNICOM 122.8 (CTAF) 0
-----------------------	--------------------------------	--------------------------	---------------------------------



ELEV 240	TDZE 238
-----------------	-----------------



REIL Rwy 32 0
MIRL Rwy 14-32 0

700	2000	OYUGO	VGSi and RNAV glidepath not coincident (VGSi Angle 3.00/TCH 25).	
*LNAV only.		QEGCU 2.7 NM to RW32	MAXKA 1900	NOVIC 10000 2000
*1 NM to RW32		1140	318°	138°
RW32		1 NM	1.7 NM	2.4 NM
		6 NM	GP 3.00° TCH 50	
CATEGORY	A	B	C	D
LPV DA	488-¾	250 (300-¾)		NA
LNAV/VNAV DA	488-¾	250 (300-¾)		NA
LNAV MDA	580-1	342 (400-1)	580-1½ 342 (400-1½)	NA