

WAAS  
CH **72619**  
**W18A**

APP CRS  
**183°**

Rwy Idg **5404**  
TDZE **173**  
Apt Elev **173**

RNAV (GPS) RWY 18

FLETCHER FLD (CKM)

RNP APCH-GPS.

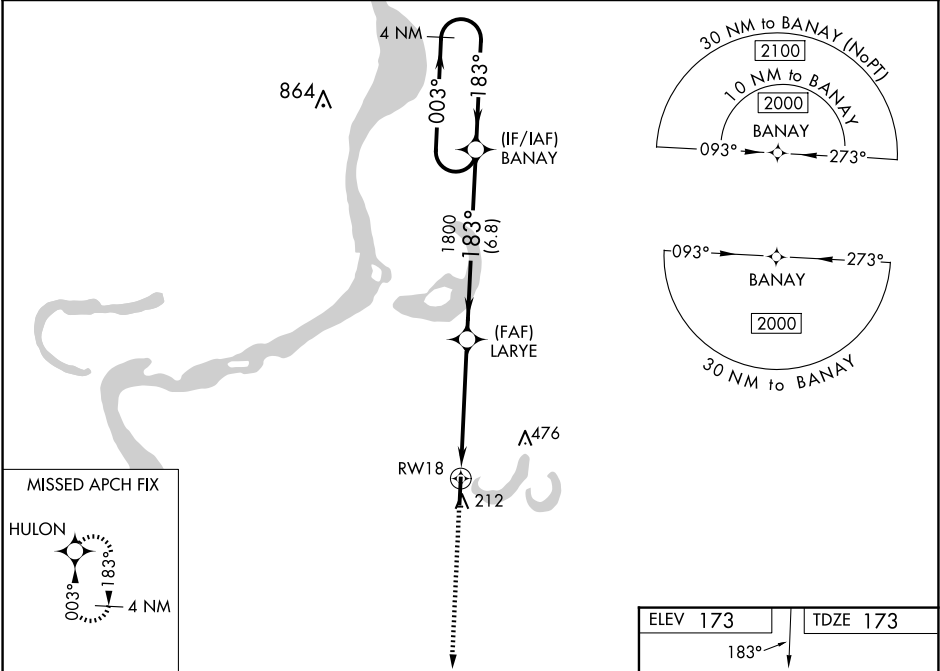
▼

⚠

For uncompensated Baro-VNAV systems, LNAV/VNAV NA below -15°C or above 54°C. Baro-VNAV and VDP NA when using Tunica altimeter setting. When local altimeter setting not received, use Tunica altimeter setting: increase LPV DA to 483 feet, LNAV/VNAV DA to 647 feet and all MDA 60 feet; increase LPV all Cats visibility ¼ SM, LNAV/VNAV all Cats visibility ¼ SM, and LNAV Cat C/D visibility ½ SM. Circling Rwy 36 NA at night.

MISSED APPROACH:  
Climb to 2000 direct HULON and hold.


AWOS-3 <b>120.675</b>	MEMPHIS CENTER <b>135.3 335.8</b>	UNICOM <b>122.8 (CTAF) 0</b>
--------------------------	--------------------------------------	---------------------------------



2000

↑

HULON



4 NM

Holding Pattern

LARYE

1800

BANAY

2000

1.4 NM to RW18

183°

003° →

← 183°

GP 3.00°

TCH 40

RW18

1.4 NM

3.6 NM

6.8 NM

CATEGORY

A

B

C

D

LPV DA

423-7⁄8

250 (300-7⁄8)

LNAV/VNAV DA

587-13⁄8

414 (500-13⁄8)

LNAV MDA

640-1

467 (500-1)

640-13⁄8

467 (500-13⁄8)

CIRCLING

740-1

567 (600-1)

780-13⁄4

607 (700-13⁄4)

780-2

607 (700-2)

