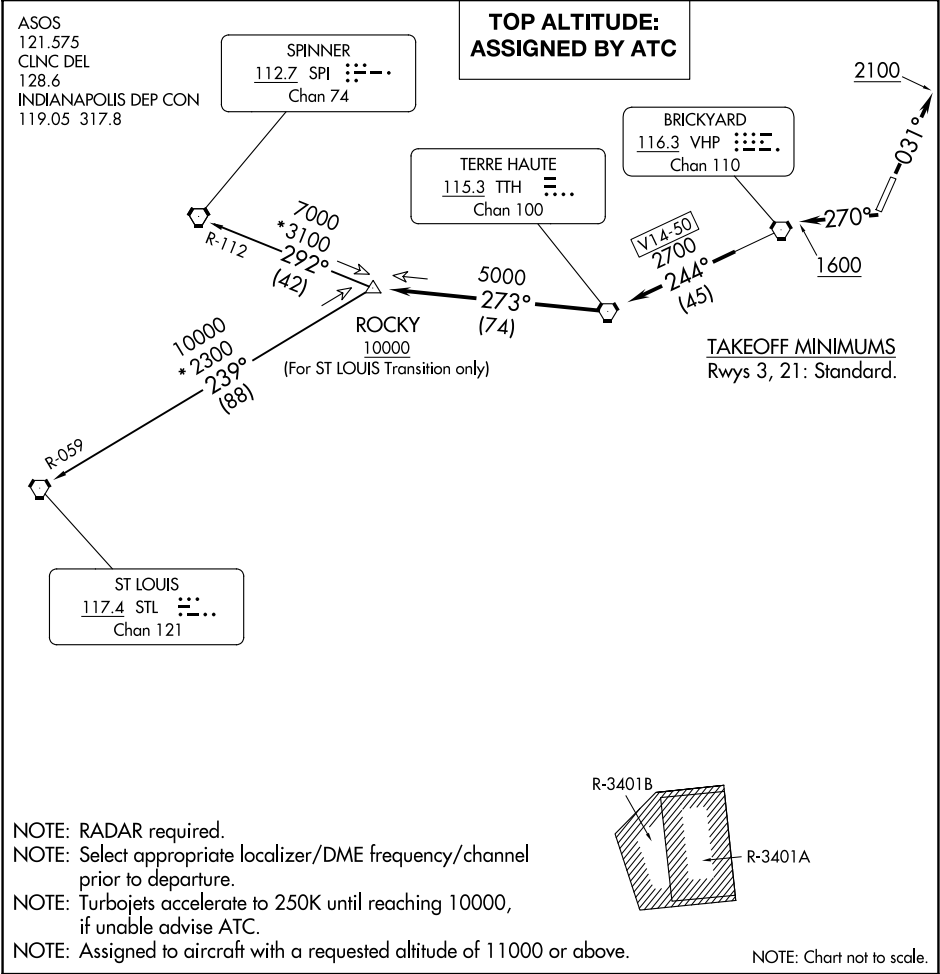


(ROCKY1.ROCKY) 23334
ROCKY ONE DEPARTURE

AL-5733 (FAA)

EAGLE CREEK AIRPARK (EYE)
INDIANAPOLIS, INDIANA



EC-2, 10 JUL 2025 to 07 AUG 2025

EC-2, 10 JUL 2025 to 07 AUG 2025

DEPARTURE ROUTE DESCRIPTION

TAKEOFF RWY 3: Climb heading 031° to 2100, then on assigned heading to assigned altitude. Thence . . .

TAKEOFF RWY 21: Climb heading 270° to 1600, then on assigned heading to assigned altitude. Thence . . .

. . . expect RADAR vectors to join VHP R-244 to TTH VORTAC, then via TTH R-273 to ROCKY INT then via transition or assigned route. Expect clearance to requested altitude ten minutes after departure.

SPINNER TRANSITION (ROCKY1.SPI): From over ROCKY INT on SPI R-112 to SPI VORTAC.

ST LOUIS TRANSITION (ROCKY1.STL): From over ROCKY INT on STL R-059 to STL VORTAC.