

RNAV (GPS) RWY 21

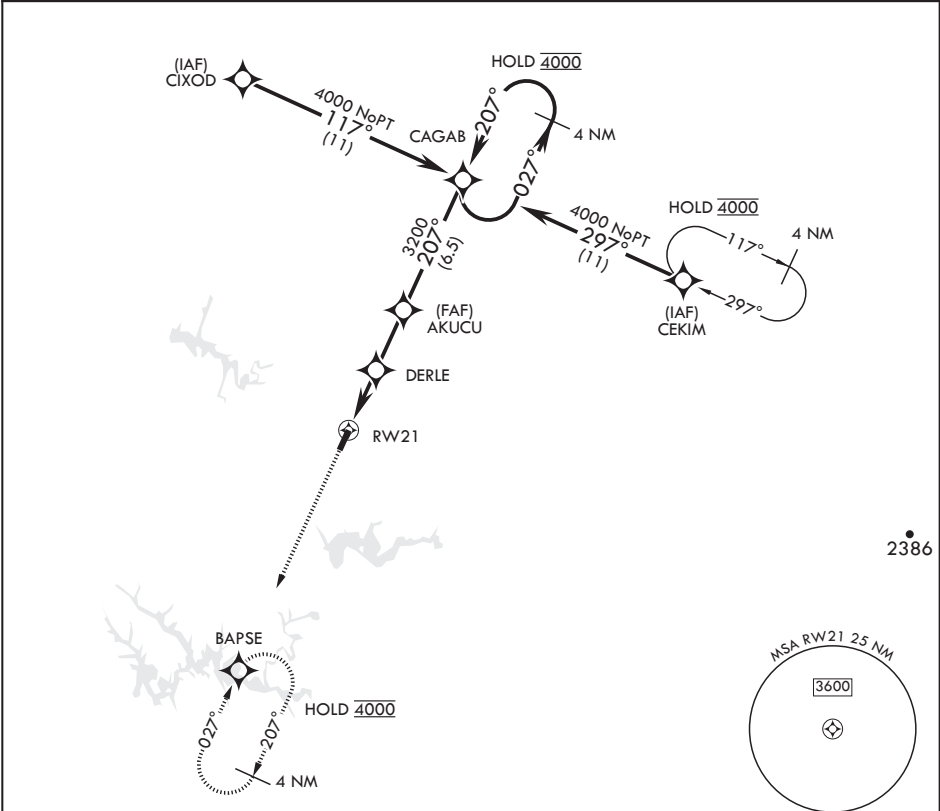
APCH CRS	Rwy Idg	6001
207°	TDZE	1065
	Arprt Elev	1065

- (USAF)

ARNOLD AFB (KAYX)

RNP APCH	MISSED APPROACH: Climb to 4000 direct BAPSE and hold.
* Circling not authorized NW of RWY 3-21.	

UNICOM	
126.2 (CTAF) 257.975 (CTAF)	



EMERG SAFE ALT 100 NM 5800

4000 BAPSE		ELEV 1065		TDZE 1065	
		CAGAB 4 NM Holding Pattern			
AKUCU 3200		DERLE 2200		† DERLE to RWY 21 † < 3.44° TCH 50	
CATEGORY	A	B	C	D	
LNAV MDA	1480-1 415 (500-1)	1480-1 415 (500-1)	1480-1 415 (500-1)	1480-1 415 (500-1)	
CIRCLING*	1520-1 455 (500-1)	1620-1 555 (600-1)	1640-1 575 (600-1)	1800-2 735 (800-2)	

RNAV (GPS) RWY 21

SE-1, 10 JUL 2025 to 07 AUG 2025

SE-1, 10 JUL 2025 to 07 AUG 2025