

VORTAC RZS	APP CRS	Rwy Ldg	2803
114.9	097°	TDZE	674
Chan 96		Apt Elev	674

VOR RWY 8

SANTA YNEZ/KUNKLE FLD (IZA)

⚠

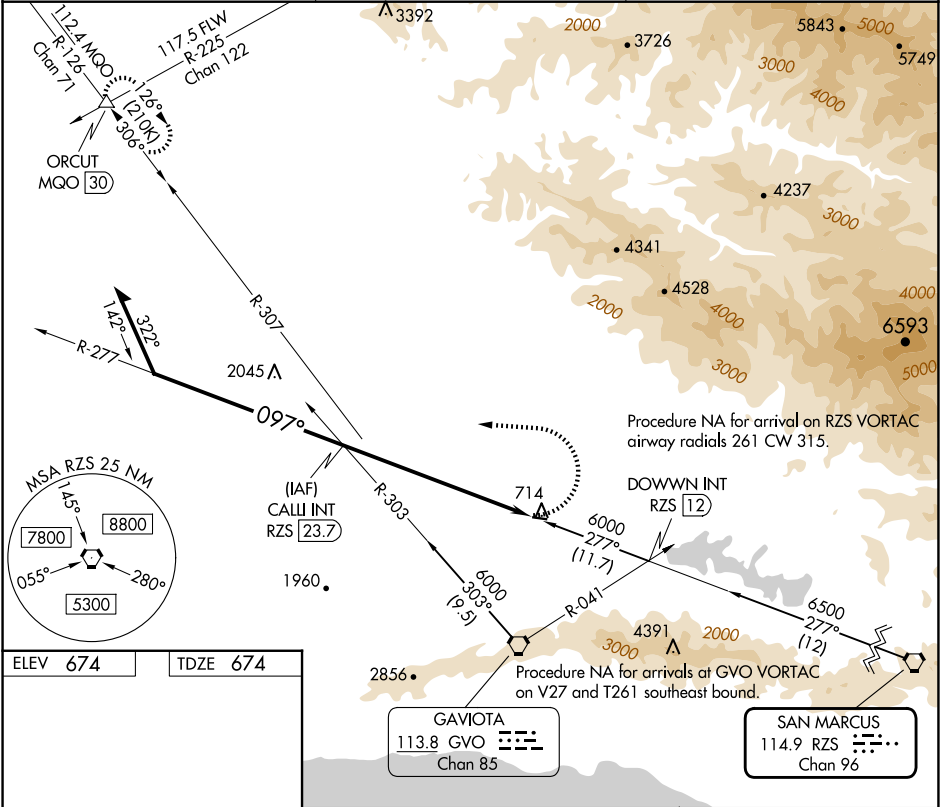
Straight-in Rwy 8 NA at night. Circling Rwy 8 NA at night.

⚠

Rwy 8 helicopter visibility reduction below 1 SM NA.

MISSED APPROACH: Climbing left turn to 6000 on heading 285° and on GVO VORTAC R-307 and MQO VORTAC R-126 to ORCUT INT and hold.

AWOS-3PT 118.075	SANTA BARBARA APP CON★ 124.15 327.8	UNICOM 122.8 (CTAF) 0
---------------------	--	--------------------------



ELEV 674

TDZE 674

097°

0.7% UP

2803 X 75

26

REIL Rws 8 and 26 1

MIRL Rwy 8-26 1

FAF to MAP 7.3 NM

Knots	60	90	120	150	180
Min:Sec	7:18	4:52	3:39	2:55	2:26

CALLI INT RZS 23.7

6000

hdg 285°

GVO R-307

MQO R-126

ORCUT

3200

277°

3400

097°

3000

3.00° TCH 30

RZS 16.4

7.3 NM

CATEGORY	A	B	C	D
S-8	2040-1¼ 1366 (1400-1¼)	2040-1½ 1366 (1400-1½)	NA	
CIRCLING	2040-1¼ 1366 (1400-1¼)	2040-1½ 1366 (1400-1½)	NA	