

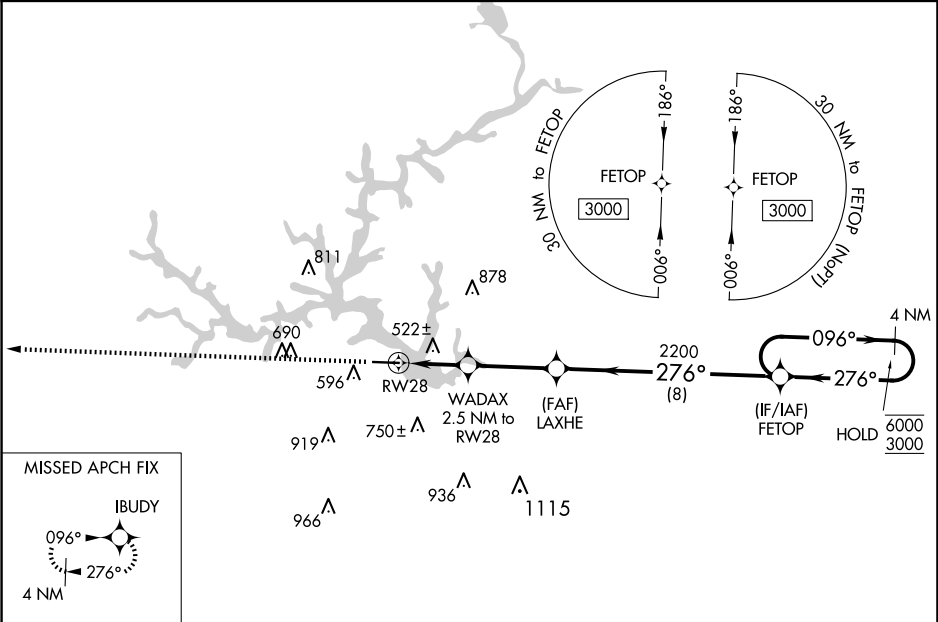
WAAS CH 82318 W28A	APP CRS 276°	Rwy Ldg TDZE Apt Elev	5424 379 385
--	------------------------	-----------------------------	---

RNAV (GPS) RWY 28

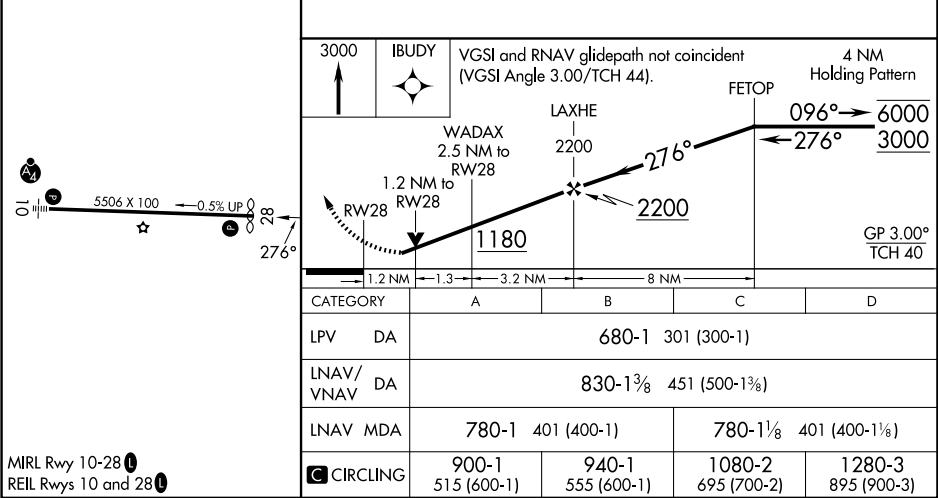
BALDWIN COUNTY RGNL (MLJ)

RNP APCH-GPS.	MISSED APPROACH: Climb to 3000 direct IBUDY and hold.
Rwy 28 helicopter visibility reduction below ¾ SM NA. For uncompensated Baro-VNAV systems, LNAV/VNAV NA below -15°C or above 54°C.	

AWOS-3 120.925	ATLANTA APP CON ★ 124.2 279.6	UNICOM 122.975 (CTAF) 0
--------------------------	---	-----------------------------------



ELEV 385	TDZE 379
----------	----------



MIRL Rwy 10-28 0
REIL Rwy 10 and 28 0