

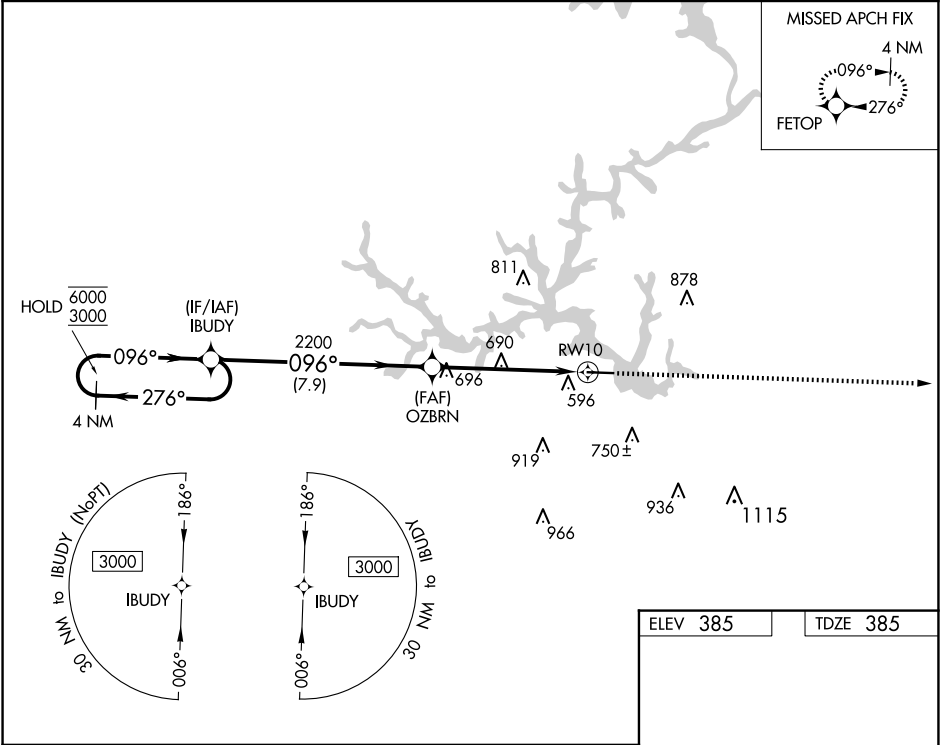
APP CRS	Rwy Ldg	5506
096°	TDZE	385
	Apt Elev	385

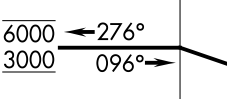
RNAV (GPS) RWY 10

BALDWIN COUNTY RGNL (MLJ)

RNP APCH - GPS.	MALSF	MISSED APPROACH: Climb to 3000 direct FETOP and hold.
▼ ▲ Rwy 10 helicopter visibility reduction below ¾ SM NA.		

AWOS-3 120.925	ATLANTA APP CON ★ 124.2 279.6	UNICOM 122.975 (CTAF) 0
-------------------	----------------------------------	----------------------------



4 NM Holding Pattern		IBUDY		3000 ↑ 3000		FETOP ✦	
6000 ← 276°		IBUDY					
3000 → 096°							
		OZBRN		5506 X 100 → 0.5% UP 28			
		2200		096°			
		3.00° TCH 44		1.8 NM to RW10			
		7.9 NM		RW10			
		3.8 NM					
		1.8					
CATEGORY	A	B	C	D			
LNAV MDA	1000-1	615 (700-1)	1000-1½	615 (700-1½)			
CIRCLING	1000-1	615 (700-1)	1080-2 695 (700-2)	1280-3 895 (900-3)	MIRL Rwy 10-28 ① REIL Rwy 10 and 28 ①		

SE-4, 10 JUL 2025 to 07 AUG 2025

SE-4, 10 JUL 2025 to 07 AUG 2025