

NDB UMB

380

APP CRS

276°

Rwy Ldg TDZE Apt Elev

5424 379 385

NDB RWY 28

BALDWIN COUNTY RGNL (MLJ)

▼

⚠

Rwy 28 helicopter visibility reduction below ¾ SM NA.

MISSED APPROACH: Climb to 1400 then climbing left turn to 2400 direct UMB NDB and hold, continue climb-in-hold to 2400.

AWOS-3

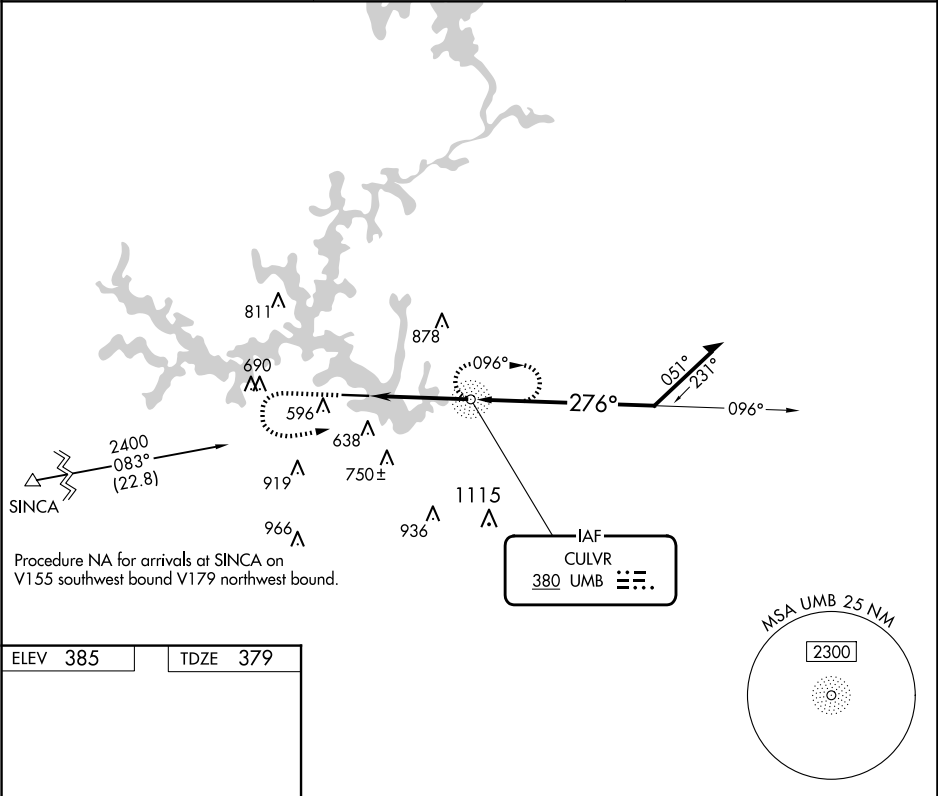
120.925

ATLANTA APP CON ★

124.2 279.6

UNICOM

122.975 (CTAF) 0



ELEV 385

TDZE 379

MIRL Rwy 10-28

REIL Rwys 10 and 28

FAF to MAP 3.7 NM

Knots	60	90	120	150	180
Min:Sec	3:42	2:28	1:51	1:29	1:14

1400

2400

UMB

UMB NDB

Remain within 10 NM

2400

276°

1600

3.07°

TCH 40

3.7 NM

CATEGORY	A	B	C	D
S-28	940-1	561 (600-1)	940-1½	561 (600-1½)
CIRCLING	940-1	555 (600-1)	1080-2	1280-3
			695 (700-2)	895 (900-3)