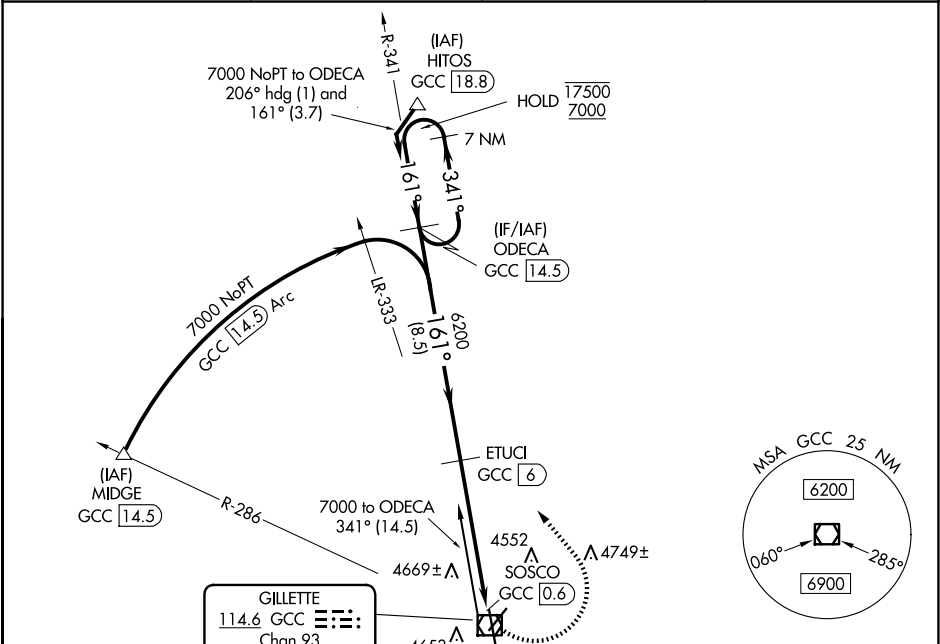


VOR/DME GCC	APP CRS	Rwy Idg	7500
114.6	161°	TDZE	4337
Chan 93		Apt Elev	4365

VOR RWY 16  
NORTHEAST WYOMING RGNL (GCC)

DME required.		MISSED APPROACH: Climbing left turn to 7000 on heading 311° and GCC R-341 to ODECA/14.5 DME and hold.	
ASOS 124.175		DENVER CENTER 135.6 363.025	CTAF 118.5



ELEV 4365 D TDZE 4337		161° 5.5 NM from FAF	
7 NM Holding Pattern		ODECA GCC 14.5	
17500 7000 341° 161°		7000 hdg 311°	
VGSI and descent angles not coincident (VGSI Angle 3.17/TCH 43).		ETUCI GCC 6	
6200		GCC 2.1	
8.5 NM		GCC VOR/DME	
3.9 NM		SOSCO GCC 0.6	
1.6 NM		ODECA GCC 14.5	
CATEGORY	A	B	C
S-16	4920-1	583 (600-1)	4920-1¾ 583 (600-1¾)
CIRCLING	5040-1 675 (700-1)	5240-1¼ 875 (900-1¼)	5400-3 1035 (1100-3)

NW-1, 10 JUL 2025 to 07 AUG 2025

NW-1, 10 JUL 2025 to 07 AUG 2025