

WAAS  
CH **86204**  
**W34A**

APP CRS  
**341°**

Rwy Idg  
TDZE  
Apt Elev  
**7500**  
**4365**  
**4365**

**RNAV (GPS) RWY 34**

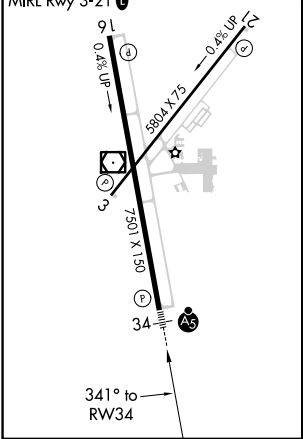
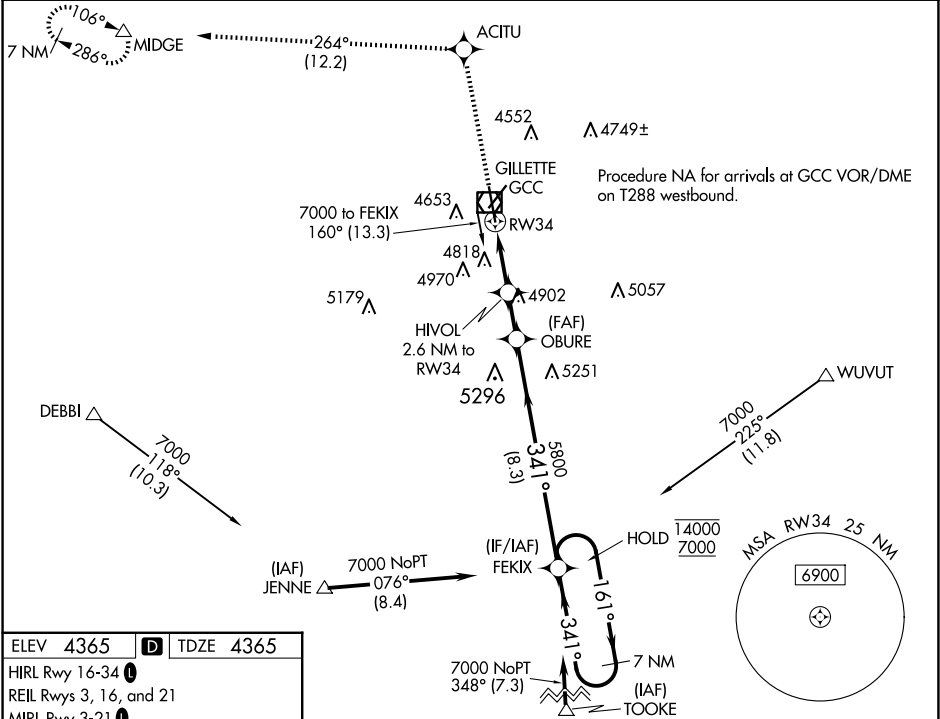
NORTHEAST WYOMING RGNL (GCC)

RNP APCH.  
⚠ Circling Rwy 3 NA at night. Inop table does not apply to LPV and LNAV/VNAV. For uncompensated Baro-VNAV systems, LNAV/VNAV NA below -23°C or above 54°C. For inop ALS, increase LNAV Cat A visibility to 1 SM, and Cat C/D to 2 SM. Rwy 34 helicopter visibility reduction below ¾ SM NA.

MALSR  
⚠

MISSED APPROACH:  
Climb to 7000 direct  
ACITU and on track 264°  
to MIDGE and hold.

ASOS <b>124.175</b>	DENVER CENTER <b>135.6 363.025</b>	UNICOM <b>122.95</b>	CTAF <b>118.5</b>
------------------------	---------------------------------------	-------------------------	----------------------



7000	ACITU	tr 264°	MIDGE	VGSI and RNAV glidepath not coincident. (VGSI Angle 3.20/TCH 56)	7 NM	Holding Pattern
*LNAV only.	HIVOL 2.6 NM to RW34	*2.1 NM to RW34	OBURE	FEKIX	161°	14000
	5240*	5800			341°	7000
	2.1 NM	0.5	1.7 NM	8.3 NM		
GP 3.00°						TCH 52
CATEGORY	A	B	C	D		
LPV	DA	4620-¾	255 (300-¾)			
LNAV/VNAV	DA	5480-4	1115 (1200-4)			
LNAV	MDA	5120-¾	755 (800-¾)	5120-1¾	755 (800-1¾)	
CIRCLING	5120-1	5240-1¼	875 (900-1¼)	5400-3	1035 (1100-3)	