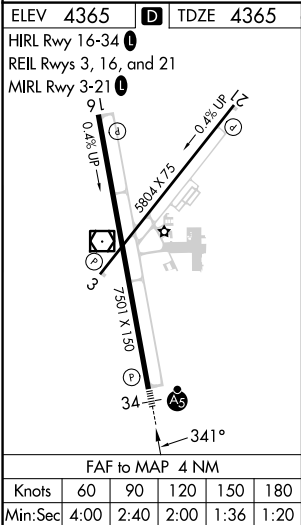
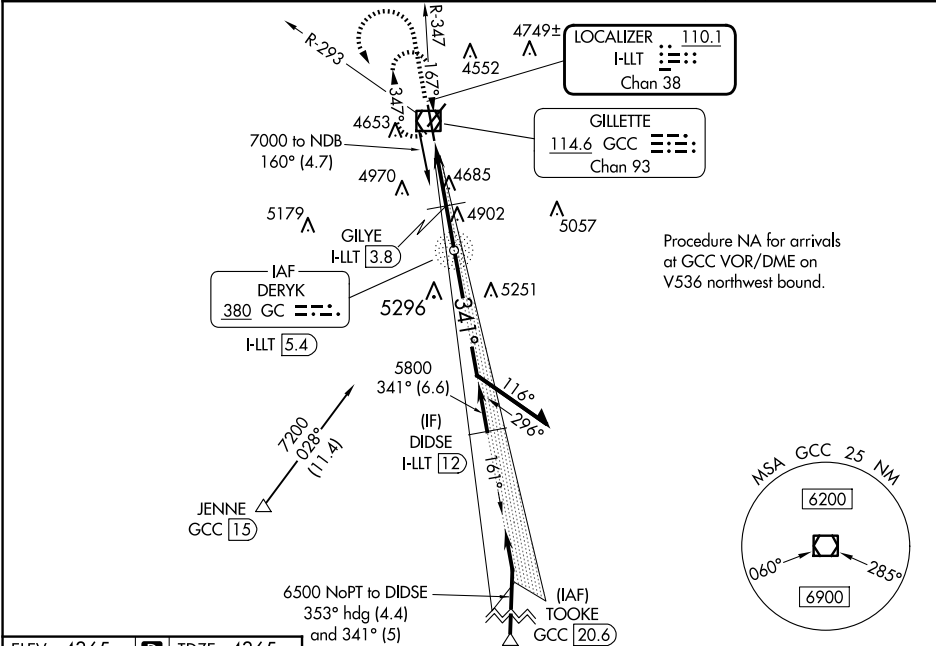


LOC/DME I-LLT <b>110.1</b> Chan <b>38</b>	APP CRS <b>341°</b>	Rwy Ldg TDZE <b>4365</b> Apt Elev <b>4365</b>
---	------------------------	---

ILS or LOC RWY 34  
NORTHEAST WYOMING RGNL (GCC)

ADF or DME required. <b>⚠</b> Circling Rwy 3 NA at night. For inop ALS when using GILYE FIX minimums, increase Cat C/D visibility to 1½ SM.		MALSR 	MISSED APPROACH: Climb to 5700 then climbing left turn to 7000 on heading 150° and on GCC VOR/DME R-293 to GCC VOR/DME and hold, continue climb-in-hold to 7000.
ASOS <b>124.175</b>	DENVER CENTER <b>135.6 363.025</b>	UNICOM <b>122.95</b>	CTAF <b>118.5</b>



5700	7000	GCC R-293	GCC	DERYK NDB I-LLT 5.4	VGSI and ILS glidepath not coincident. (VGSI Angle 3.20/TCH 56)
↑	hdg 150°				Remain within 10 NM
Use I-LLT DME when on the LOC course.					
*LOC only	I-LLT 1.4	*HLLT 3	GILYE HLLT 3.8	5710	161°
				5240*	341°
				5800	6600
					GS 3.00° TCH 52
	1.6 NM	0.8	1.6 NM		
CATEGORY	A	B	C	D	
S-ILS 34		4565-½	200 (200-½)		
S-LOC 34	5240-½ 875 (900-½)	5240-¾ 875 (900-¾)	5240-2	875 (900-2)	
<b>C</b> CIRCLING	5240-1¼	875 (900-1¼)	5400-3	1035 (1100-3)	
GILYE FIX MINIMUMS					
S-LOC 34	4940-½	575 (600-½)	4940-1¼	575 (600-1¼)	
<b>C</b> CIRCLING	5040-1 675 (700-1)	5240-1¼ 875 (900-1¼)	5400-3	1035 (1100-3)	

NW-1, 10 JUL 2025 to 07 AUG 2025

NW-1, 10 JUL 2025 to 07 AUG 2025