

APP CRS
090°

Rwy Idg
5646

TDZE
590

Apt Elev
590

RNAV (GPS) RWY 9

ERIE-OTTAWA INTL (PCW)

RNP APCH - GPS.

▼

▲

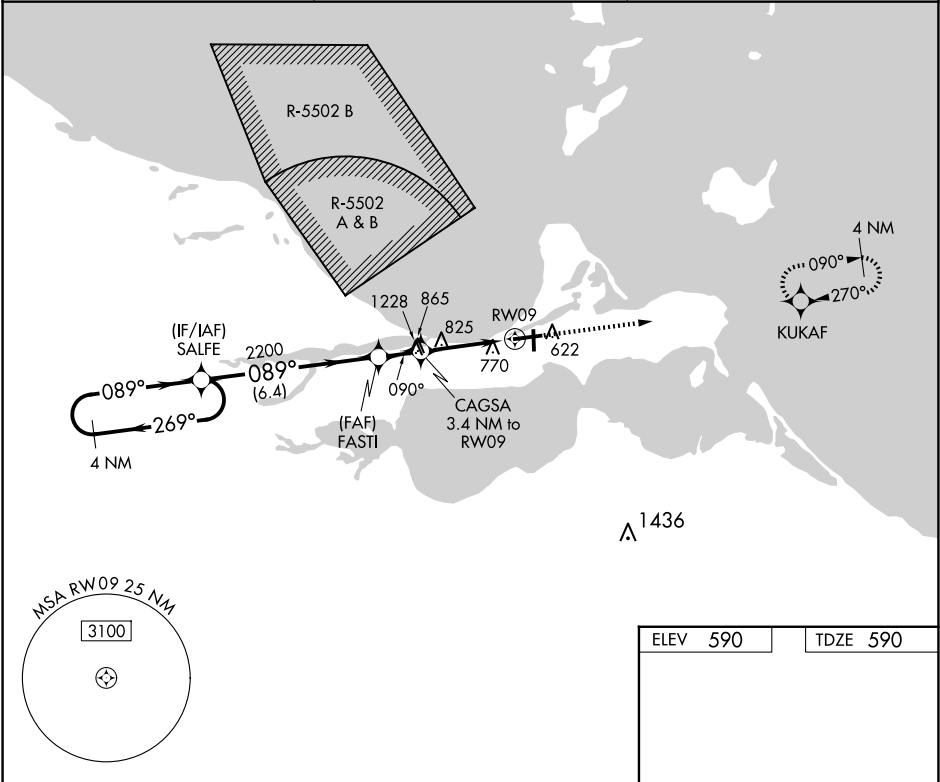
When local altimeter setting not received, use Toledo Executive altimeter setting and increase all MDA 80 feet and all Cat C/D visibilities ¼ mile. Rwy 9 helicopter visibility reduction below ¾ SM NA. Circling Rwy 18, 36 NA at night.

MISSED APPROACH:
Climb to 2500 direct KUKAF and hold.

AWOS-3
118.775

CLEVELAND APP CON
126.35 346.325

UNICOM
122.8 (CTAF) 0



4 NM Holding Pattern

SALFE

FASTI

CAGSA 3.4 NM to RWY09

RWY09

3000

269°

089°

089°

090°

2200

1720

6.4 NM

1.5 NM

3.4 NM

2500

KUKAF

5646 X 100

4002 X 75

36

27

81

CATEGORY	A	B	C	D
LNNAV MDA	1140-1	550 (600-1)	1140-1½	550 (600-1½)
CIRCLING	1140-1	550 (600-1)	1180-1½ 590 (600-1½)	1580-3 990 (1000-3)

HIRL Rwy 9-27 0

MIRL Rwy 18-36 0

REIL Rwys 9 and 27 0