

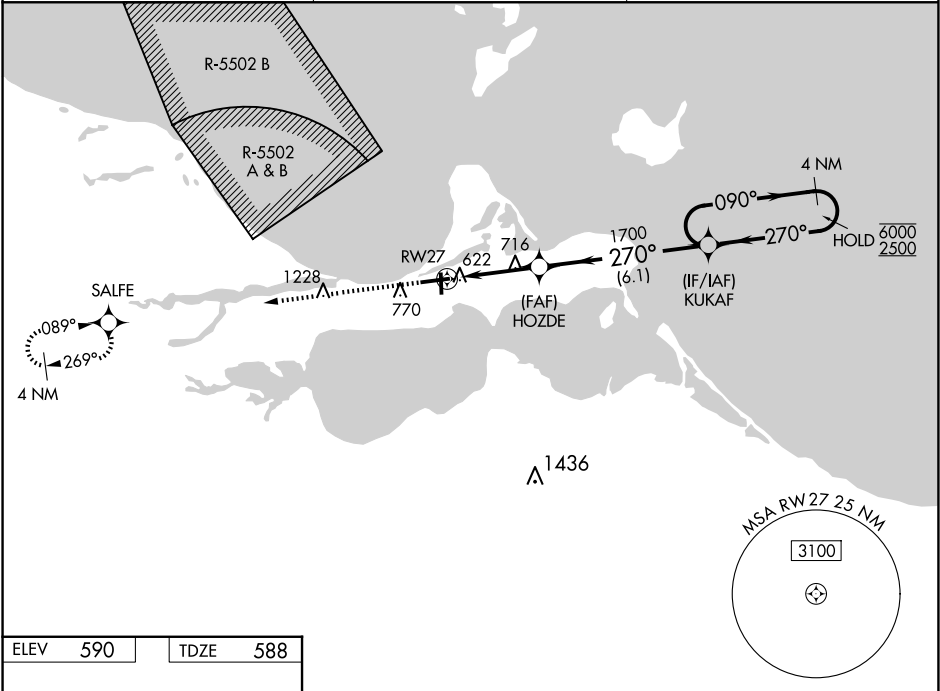
WAAS CH <b>58012</b> <b>W27A</b>	APP CRS <b>270°</b>	Rwy Idg TDZE <b>588</b> Apt Elev <b>590</b>
--	------------------------	---

RNAV (GPS) RWY 27

ERIE-OTTAWA INTL (PCW)

RNP APCH - GPS.	MISSED APPROACH: Climb to 3000 direct SALFE and hold.
Circling Rwy 18, 36 NA at night. Rwy 27 helicopter visibility reduction below 1 SM NA. For uncompensated Baro-VNAV systems, LNAV/VNAV NA below -16°C or above 54°C.	

AWOS-3 <b>118.775</b>	CLEVELAND APP CON <b>126.35 346.325</b>	UNICOM <b>122.8 (CTAF) 0</b>
--------------------------	--	---------------------------------



ELEV 590

TDZE 588

3000

SALFE

1.1 NM

2.3 NM

6.1 NM

1.1 NM

2.3 NM

6.1 NM

3000

SALFE

HOZDE

1700

KUKAF

4 NM Holding Pattern

090°

270°

6000

2500

GP 3.00°

TCH 40

CATEGORY	A	B	C	D
LPV DA	842-1		254 (300-1)	
LNAV/VNAV DA	969-1 1/8		381 (400-1 1/8)	
LNAV MDA	980-1	392 (400-1)	980-1 1/8	392 (400-1 1/8)
CIRCLING	1140-1	550 (600-1)	1180-1 1/2 590 (600-1 1/2)	1580-3 990 (1000-3)

HIRL Rwy 9-27 1

MIRL Rwy 18-36 1

REIL Rwy 9 and 27 1

PORT CLINTON, OHIO  
Amdt 2 27JAN22

41°31'N-82°52'W

ERIE-OTTAWA INTL (PCW)

RNAV (GPS) RWY 27

EC-2, 10 JUL 2025 to 07 AUG 2025

EC-2, 10 JUL 2025 to 07 AUG 2025