

WAAS CH <b>90141</b> <b>W23A</b>	APP CRS <b>233°</b>	Rwy Idg <b>7001</b> TDZE <b>671</b> Apt Elev <b>683</b>
--	------------------------	---

# RNAV (GPS) RWY 23

## CHARLOTTE/MONROE EXEC (EQY)

RNP APCH-GPS.



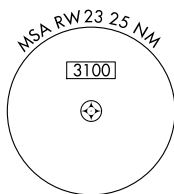
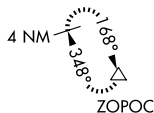
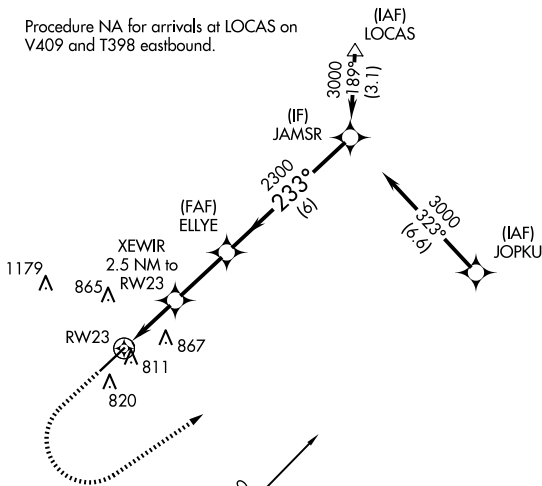
Rwy 23 helicopter visibility reduction below  $\frac{3}{4}$  SM NA. For uncompensated Baro-VNAV systems, LNAV/VNAV NA below  $-7^{\circ}\text{C}$  or above  $54^{\circ}\text{C}$ .

**MISSED APPROACH:** Climb to 1200 then climbing left turn to 3000 direct ZOPOC and hold.

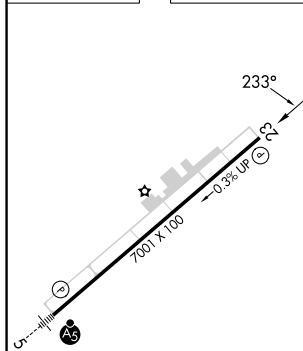
ASOS <b>135.775</b>	CHARLOTTE APP CON <b>120.05 307.8</b>	CLNC DEL <b>132.55</b>	UNICOM <b>122.7 (CTAF) 0</b>
------------------------	--	---------------------------	---------------------------------



Procedure NA for arrivals at LOCAS on V409 and T398 eastbound.

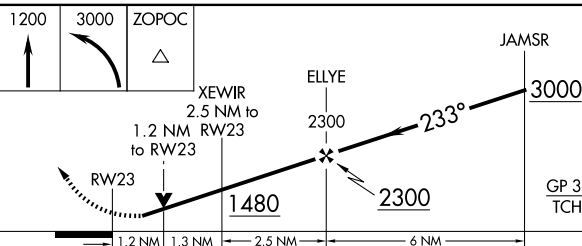



ELEV 683		TDZE 671
----------	--	----------



HUSTN

Procedure NA for arrivals at HUSTN on V296 westbound, V259 northwest bound, and T202 southwest bound.



CATEGORY		A	B	C	D
LPV	DA	939-1		268 (300-1)	
LNAV/ VNAV	DA	981-1		310 (300-1)	
LNAV	MDA	1080-1 409 (400-1)		1080-1½ 409 (400-1½)	
 CIRCLING		1220-1 537 (600-1)		1220-1½ 537 (600-1½)	1480-2½ 797 (800-2½)

HIRL Rwy 5-23 **L**  
REIL Rwy 23 **L**