

(KER4.KER) 24081
KERMIT FOUR DEPARTURE

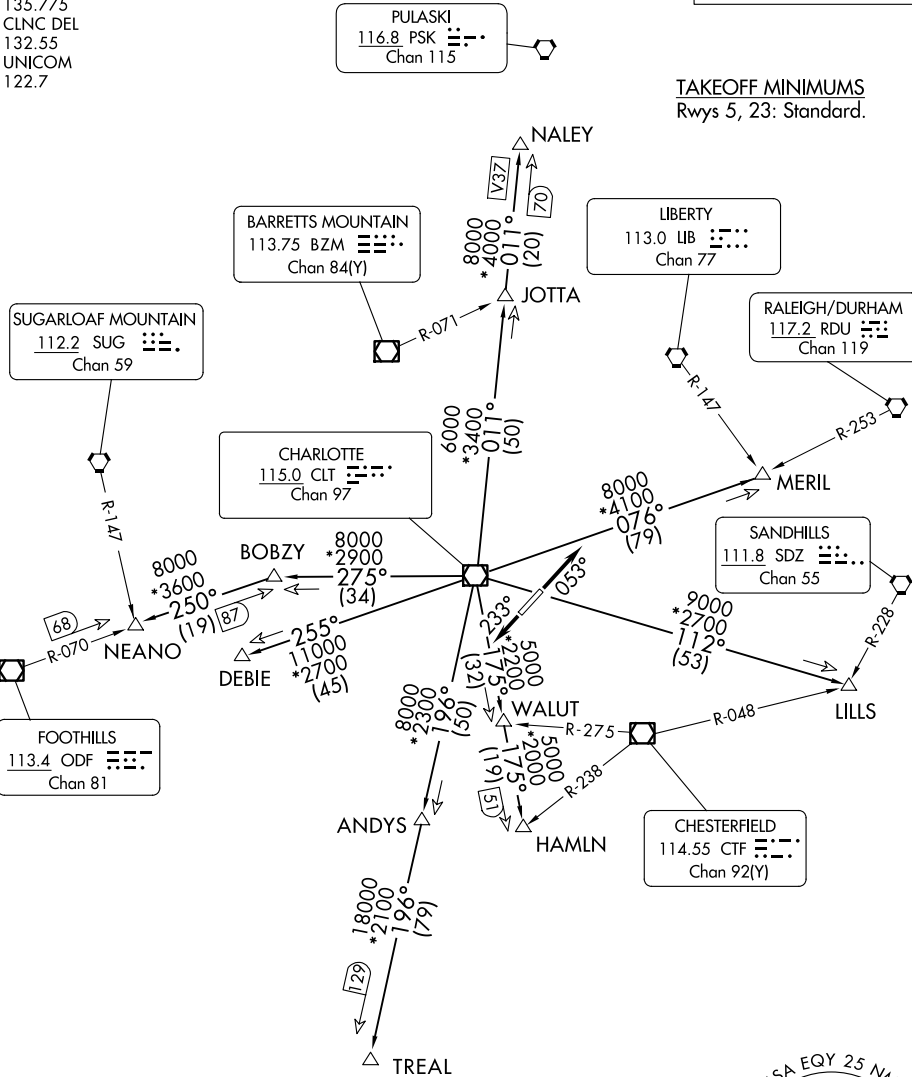
AL-5726 (FAA)
CHARLOTTE/MONROE EXEC (EQY)
MONROE, NORTH CAROLINA

CHARLOTTE DEP CON
120.05 307.8
ASOS
135.775
CLNC DEL
132.55
UNICOM
122.7

RADAR and DME required.

TOP ALTITUDE:
3000

TAKEOFF MINIMUMS
Rwys 5, 23: Standard.



NOTE: For turbo jet aircraft only.
NOTE: Upon reaching 10000 MSL, accelerate to
and maintain 280K, if unable advise ATC.
NOTE: Transponder code will be issued via Charlotte
clearance delivery.

NOTE: Chart not to scale.

(CONTINUED ON FOLLOWING PAGE)

KERMIT FOUR DEPARTURE
(KER4.KER) 21MAR24

MONROE, NORTH CAROLINA
CHARLOTTE/MONROE EXEC (EQY)

SE-2, 10 JUL 2025 to 07 AUG 2025