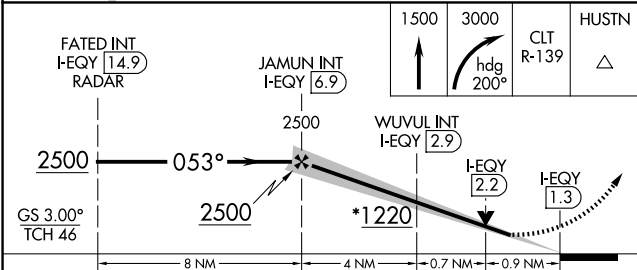
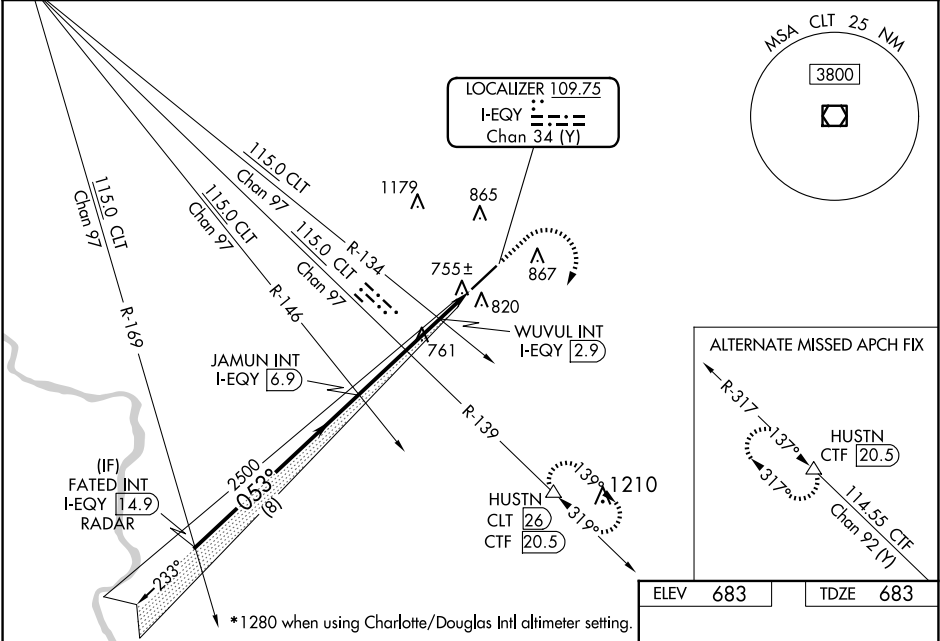


LOC/DME I-EQY <b>109.75</b> Chan <b>34</b> (Y)	APP CRS <b>053°</b>	Rwy Idg TDZE Apt Elev <b>7001</b> <b>683</b> <b>683</b>
--	------------------------	--

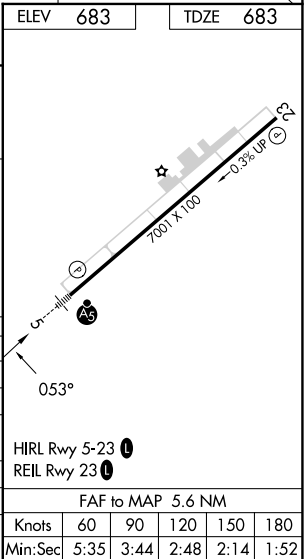
ILS or LOC RWY 5  
CHARLOTTE/MONROE EXEC (EQY)

DME required. RADAR required for procedure entry.	MALSR 	MISSED APPROACH: Climb to 1500 then climbing right turn to 3000 on heading 200° and on CLT VOR/DME R-139 to HUSTN/CLT 26 DME and hold, continue climb-in-hold to 3000.
NA Rwy 5 helicopter visibility reduction below 3/4 SM NA. Inop table does not apply to S-ILS 5 all Cats. For inop ALS, increase S-LOC 5 Cat A/B visibility and WUVUL fix minimums S-LOC 5 all Cats visibility to 1 SM.		

ASOS <b>135.775</b>	CHARLOTTE APP CON <b>120.05 307.8</b>	CLNC DEL <b>132.55</b>	UNICOM <b>122.7</b> (CTAF)
------------------------	--	---------------------------	-------------------------------



CATEGORY	A	B	C	D
S-ILS 5	933-3/4 250 (300-3/4)			
S-LOC 5	1220-3/4	537 (600-3/4)	1220-1	537 (600-1)
CIRCLING	1220-1	537 (600-1)	1220-1 1/2 537 (600-1 1/2)	1480-2 1/2 797 (800-2 1/2)
WUVUL FIX MINIMUMS (DUAL VOR RECEIVERS OR DME REQUIRED)				
S-LOC 5	1020-3/4 337 (400-3/4)			
CIRCLING	1220-1	537 (600-1)	1220-1 1/2 537 (600-1 1/2)	1480-2 1/2 797 (800-2 1/2)



SE-2, 10 JUL 2025 to 07 AUG 2025

SE-2, 10 JUL 2025 to 07 AUG 2025