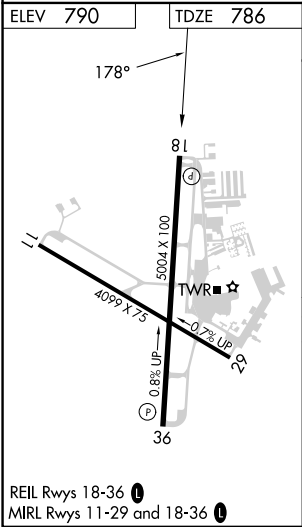
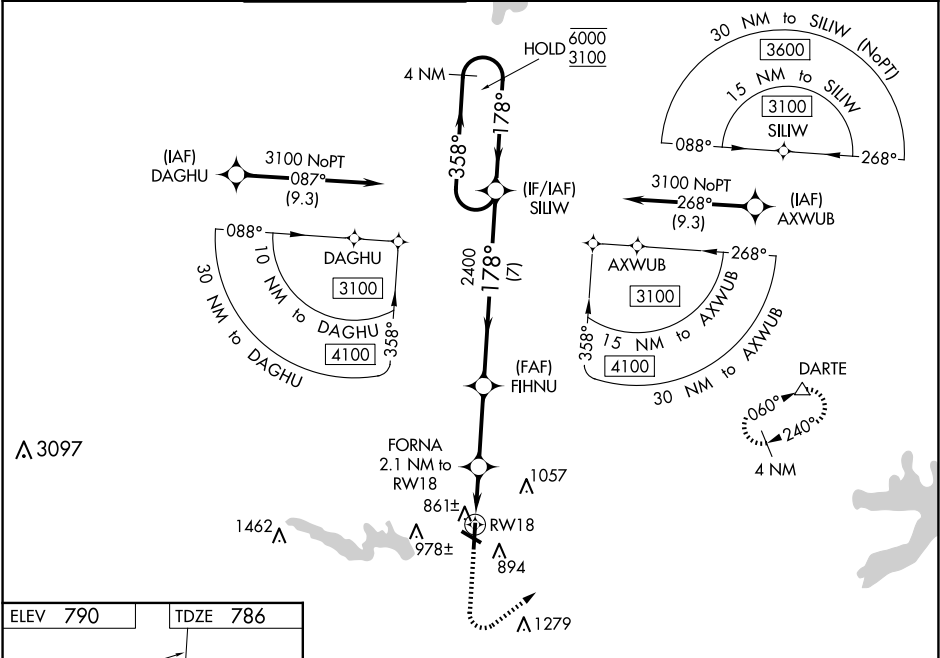


WAAS CH <b>62938</b> <b>W18A</b>	APP CRS <b>178°</b>	Rwy Idg TDZE <b>786</b> Apt Elev <b>790</b>	<b>5004</b>
--	------------------------	---	-------------

RNAV (GPS) RWY 18  
GEORGETOWN EXEC (GTU)

RNP APCH.	MISSED APPROACH: Climb to 1300 then climbing left turn to 3000 direct DARTE and hold.
⚠ Circling Rwy 29 NA at night. For uncompensated Baro-VNAV systems, LNAV/VNAV NA below -16°C or above 54°C.	

ATIS <b>118.6</b>	AUSTIN APP CON <b>119.0 370.85</b>	GEORGETOWN TOWER ★ <b>120.225</b> (CTAF) <b>0</b>	GND CON <b>119.125</b>	CLNC DEL <b>119.125</b>	CLNC DEL <b>121.1</b> (when twr closed)	UNICOM <b>123.0</b>
----------------------	---------------------------------------	--	---------------------------	----------------------------	---	------------------------



1300	3000	DARTE	SILW 4 NM Holding Pattern			
* LNAV only:		FORNA 2.1 NM to RW18	FIHNU 2400	358° → 6000 ← 178° 3100		GP 3.00° TCH 35
CATEGORY	A		B	C	D	
LPV DA			1036-1	250 (300-1)		
LNAV/ VNAV	DA		1036-1	250 (300-1)		
LNAV MDA			1120-1	334 (400-1)		
CIRCLING	1240-1 450 (500-1)	1340-1 550 (600-1)	1360-1½ 570 (600-1½)	1640-2¾ 850 (900-2¾)		

SC-3, 10 JUL 2025 to 07 AUG 2025

SC-3, 10 JUL 2025 to 07 AUG 2025