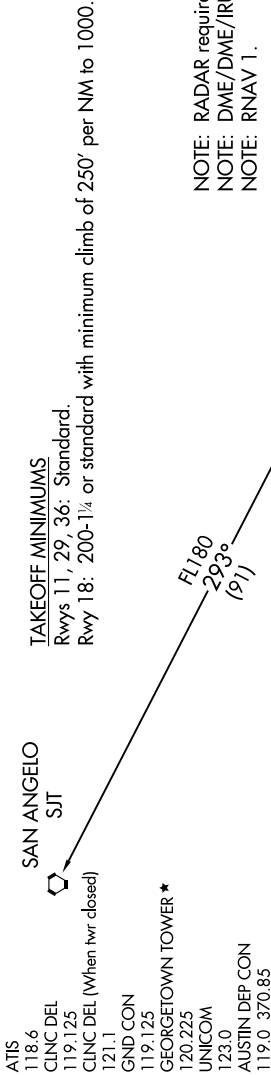


SC-3, 10 JUL 2025 to 07 AUG 2025

TOP ALTITUDE:
ASSIGNED BY ATC



NOTE: Chart not to scale.

DEPARTURE ROUTE DESCRIPTION

- TAKEOFF RUNWAY 11: Climb on heading 115° or as assigned by ATC for vectors to cross AMUSE at or above 5000, thence....
- TAKEOFF RUNWAY 18: Climb on heading 178° or as assigned by ATC for vectors to cross AMUSE at or above 5000, thence....
- TAKEOFF RUNWAY 29: Climb on heading 295° or as assigned by ATC for vectors to cross AMUSE at or above 5000, thence....
- TAKEOFF RUNWAY 36: Climb on heading 358° or as assigned by ATC for vectors to cross AMUSE at or above 5000, thence....
- ... on track 293° to AEROZ, then on SAN ANGELO TRANSITION. Maintain altitude assigned by ATC. Expect filed altitude 10 minutes after departure.

SAN ANGELO TRANSITION (AEROZ2.SJT)

SC-3, 10 JUL 2025 to 07 AUG 2025