

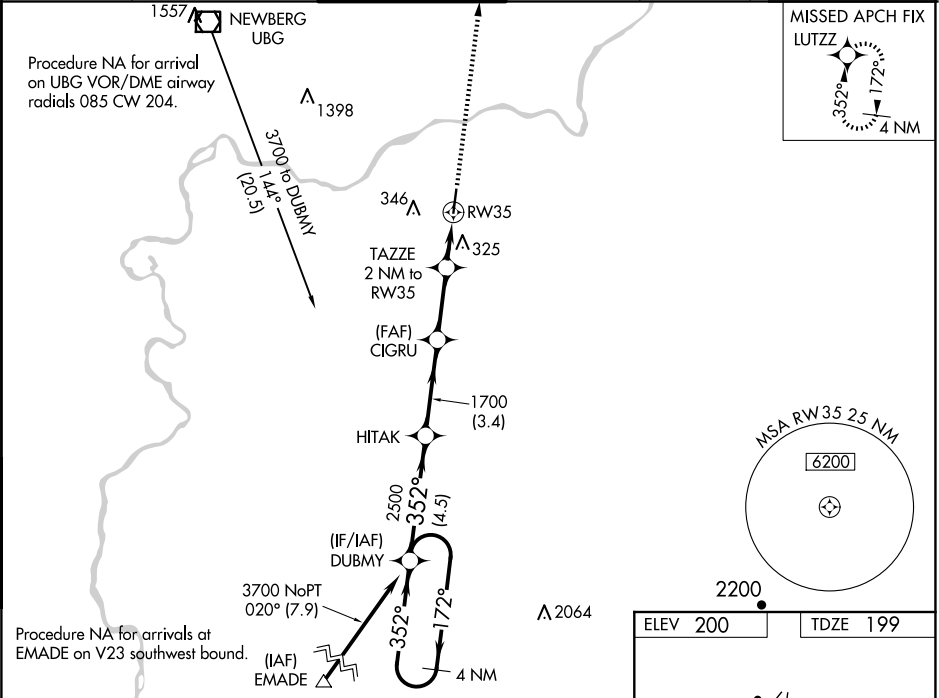
WAAS CH 7750B W35A	APP CRS 352°	Rwy Idg 5003 TDZE 199 Apt Elev 200
--	------------------------	---

RNAV (GPS) RWY 35

AURORA STATE (UAO)

RNP APCH.	MISSED APPROACH: Climb to 2500 direct LUTZZ and hold.
For uncompensated Baro-VNAV systems, LNAV/VNAV NA below -6°C or above 54°C. Rwy 35 helicopter visibility reduction below ¾ SM NA.	

ATIS 118.525	PORTLAND APP CON 126.0 269.175	AURORA TOWER★ 120.35 (CTAF)	GND CON 119.15	CLNC DEL 119.15	PORTLAND CLNC DEL 119.95 (When tower closed)
------------------------	--	---------------------------------------	--------------------------	---------------------------	---



4 NM Holding Pattern		VGSJ and RNAV glidepath not coincident (VGSJ Angle 3.25 /TCH 51).				2500	LUTZZ
3700 ←172°		DUBMY	HITAK	CIGRU	TAZZE 2 NM to RW35	*1 NM to RW35	*INAV only
352°→				1700		RW35	
GP 3.00°				2500	*860		
TCH 40				1700			
		4.5 NM		3.4 NM	2.6 NM	1 NM	1 NM
CATEGORY	A	B	C	D			
LPV DA	453-7⁄8 254 (300-7⁄8)						
INAV/ VNAV DA	515-1 316 (400-1)						
INAV MDA	620-1 421 (500-1)		620-1¼ 421 (500-1¼)				
CIRCLING	700-1 500 (500-1)		700-1½ 500 (500-1½)		940-2¼ 740 (800-2¼)		

