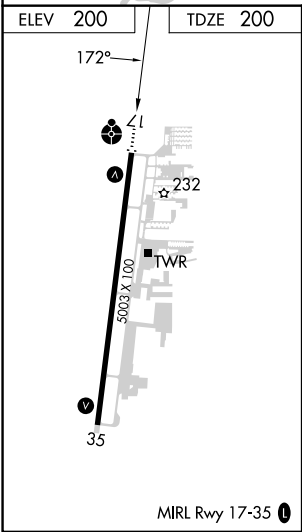
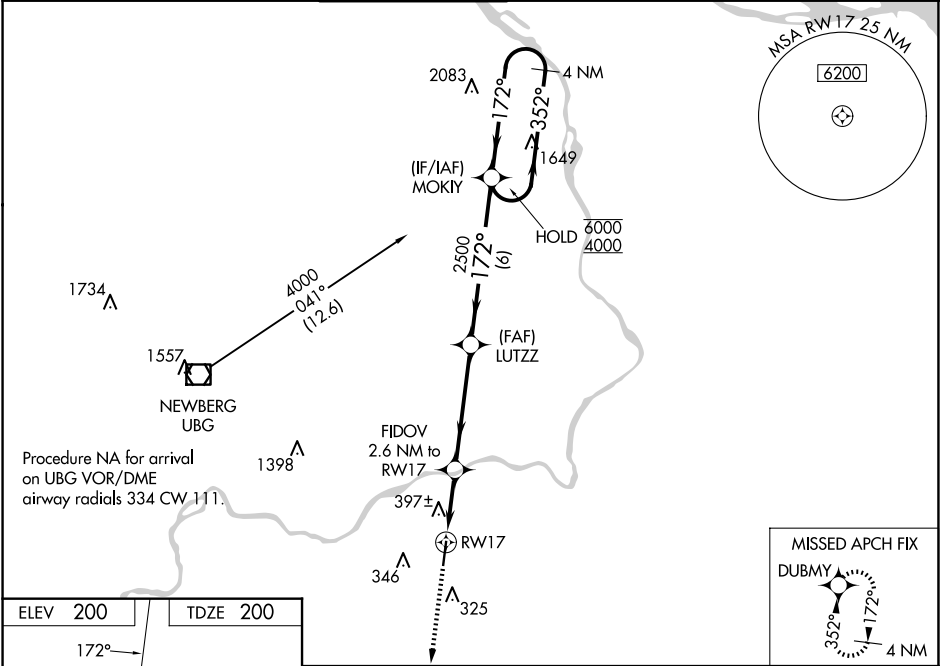


WAAS CH <b>70308</b> <b>W17A</b>	APP CRS <b>172°</b>	Rwy Idg <b>5003</b> TDZE <b>200</b> Apt Elev <b>200</b>
--	------------------------	---

RNAV (GPS) RWY 17  
AURORA STATE (UAO)

RNP APCH. ▼ Rwy 17 helicopter visibility reduction below ¾ SM NA. For uncompensated Baro-VNAV systems, LNAV/VNAV NA below -6°C or above 54°C. ▲ For inop ALS, increase LNAV/VNAV Cat A/B and LNAV Cat C/D visibility to 1½ SM. Inop table does not apply to LPV and LNAV Cat A/B.	ODALS ●●●●●	MISSED APPROACH: Climb to 3900 direct DUBMY and hold, continue climb-in-hold to 3900.
---	----------------	---

ATIS <b>118.525</b>	PORTLAND APP CON <b>126.0 269.175</b>	AURORA TOWER★ <b>120.35 (CTAF) 0</b>	GND CON <b>119.15</b>	CLNC DEL <b>119.15</b>	PORTLAND CLNC DEL <b>119.95</b> (When tower closed)
------------------------	--	---	--------------------------	---------------------------	---



3900	DUBMY	VGSI and RNAV glidepath not coincident (VGSI Angle 3.50/TCH 38).	MOKIY	4 NM Holding Pattern
FIDOV 2.6 NM to RW17	LUTZZ	2500	352° → 6000 ← 172° 4000	GP 3.00° TCH 40
*LNAV only *1.1 NM to RW17	1060*	2500		
1.1 1.5 NM 4.5 NM 6 NM				
CATEGORY	A	B	C	D
LPV DA		511-7/8	311 (400-7/8)	
LNAV/VNAV DA		661-1¼	461 (500-1¼)	
LNAV MDA	660-1	460 (500-1)	660-1½	460 (500-1½)
CIRCLING	700-1	500 (500-1)	700-1½ 500 (500-1½)	940-2¼ 740 (800-2¼)

NW-1, 10 JUL 2025 to 07 AUG 2025

NW-1, 10 JUL 2025 to 07 AUG 2025