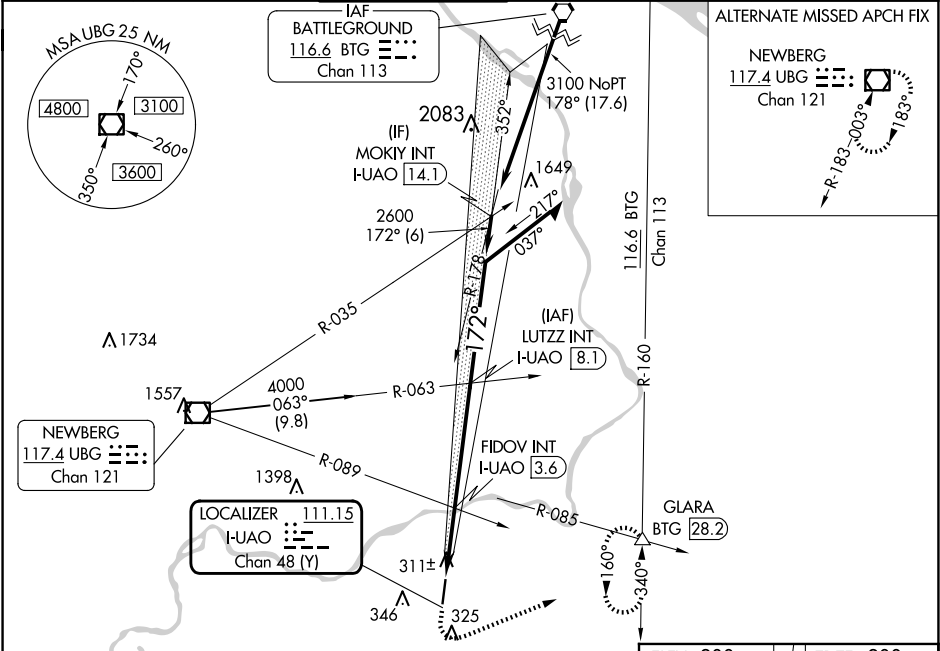


LOC/DME I-UAO	APP CRS	Rwy Idg
111.15	172°	5003
Chan 48 (Y)		TDZE 200
		Apt Elev 200

LOC RWY 17
AURORA STATE (UAO)

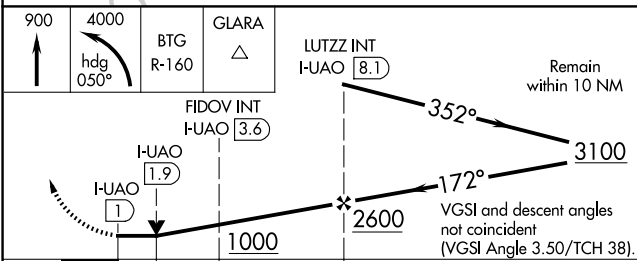
▼ Rwy 17 helicopter visibility reduction below ¾ SM NA.	ODALS	MISSED APPROACH: Climb to 900 then climbing left turn to 4000 on heading 050° and BTG R-160 to GLARA INT/ BTG 28.2 DME and hold, continue climb-in-hold to 4000.
▲ FIDOV fix minimums: Inop table does not apply to Cats C/D. For inop ALS, increase S-17 Cats C/D visibility to 2½ SM.		

ATIS 118.525	PORTLAND APP CON 126.0 269.175	AURORA TOWER★ 120.35 (CTAF) 0	GND CON 119.15	CLNC DEL 119.15	PORTLAND CLNC DEL 119.95 (When lower closed)
------------------------	--	--	--------------------------	---------------------------	---



ALTERNATE MISSED APCH FIX

NEWBERG
117.4 UBG Chan 121



CATEGORY	A	B	C	D
S-17	1000-¾ 800 (800-¾)	1000-1 800 (800-1)	1000-2	800 (800-2)
CIRCLING	1000-1 800 (800-1)	1000-1¼ 800 (800-1¼)	1000-2½	800 (800-2½)
FIDOV FIX MINIMUMS				
S-17	580-¾ 380 (400-¾)	580-1 380 (400-1)		
CIRCLING	700-1 500 (500-1)	700-1½ 500 (500-1½)	940-2¼ 740 (800-2¼)	

