

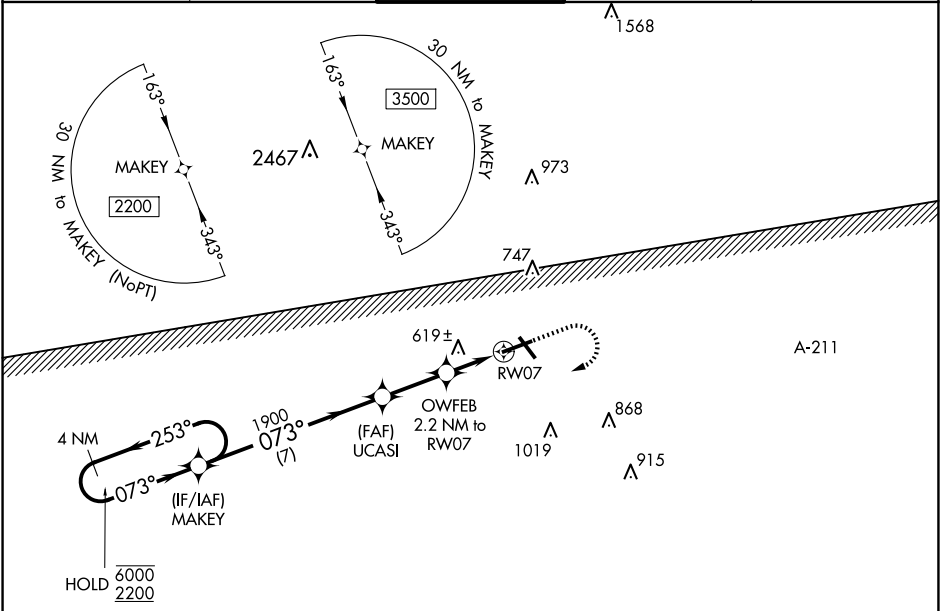
WAAS CH 82006 W07A	APP CRS 073°	Rwy Idg TDZE 389 Apt Elev 397
----------------------------------------	------------------------	---------------------------------------------------

RNAV (GPS) RWY 7

TROY MUNI AT N KENNETH CAMPBELL FLD (TOI)

RNP APCH.		MISSED APPROACH: Climb to 1300 then climbing right turn to 2200 direct MAKEY and hold.		
		Circling Rwy 14, 32 NA at night. For uncompensated Baro-VNAV systems, LNAV/VNAV NA below -7°C or above 54°C.		

ATIS 120.925	CAIRNS APP CON★ 121.1 319.25	TROY TOWER★ 124.3 (CTAF) 0 306.9	GND CON 121.9 294.7	UNICOM 122.8
------------------------	----------------------------------------	--------------------------------------------	-------------------------------	------------------------



ELEV 397		TDZE 389	
4 NM Holding Pattern		1300 2200 MAKEY	
6000 2200		UCASI 1900	
GP 3.00° TCH 44		OWFEB 2.2 NM to RW07	
253° 073°		*1120	
7 NM		*1.4 NM to RW07	
2.4 NM		0.8 NM	
1.4 NM		0.6 NM	
CATEGORY	A	B	C
LPV DA	637-7/8	248 (300-7/8)	
LNAV/VNAV DA	702-1 1/8	313 (400-1 1/8)	
LNAV MDA	880-1 491 (500-1)	880-1 3/8 491 (500-1 3/8)	
CIRCLING	1000-1 603 (700-1)	1300-2 3/4 903 (1000-2 3/4)	1380-3 983 (1000-3)
MIRL Rwy 7-25 and 14-32			

RNAV (GPS) RWY 7

SE-4, 10 JUL 2025 to 07 AUG 2025

SE-4, 10 JUL 2025 to 07 AUG 2025