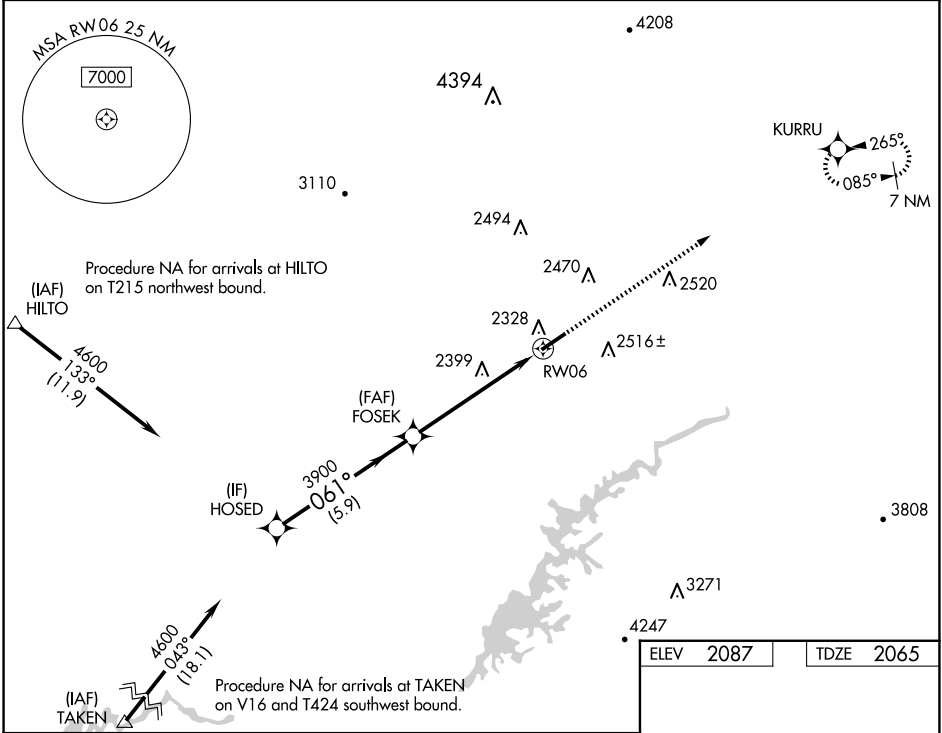


WAAS CH 82411 W06A	APP CRS 061°	Rwy Idg TDZE Apt Elev 5500 2065 2087
--	------------------------	--

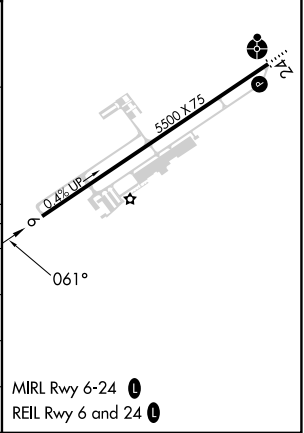
RNAV (GPS) RWY 6

VIRGINIA HIGHLANDS (VJI)

RNP APCH - GPS.		MISSED APPROACH: Climb to 7300 direct KURRU and hold, continue climb-in-hold to 7300.
<div><div>▼</div><div>▲</div></div> <div>Rwy 6 helicopter visibility reduction below ¾ SM NA. For uncompensated Baro-VNAV systems, LNAV/VNAV NA below -19°C or above 54°C.</div>		
AWOS-3 128.125	TRI CITY APP CON ★ 125.25 349.0	UNICOM 122.8 (CTAF) 0



HOSED		FOSEK		7300 KURRU	
4600		3900		1.7 NM to RW06	
GP 3.00°		061°		RW06	
TCH 45		3900		5.9 NM	
				3.9 NM	
				1.7 NM	
CATEGORY	A	B	C	D	
LPV DA	2456-1½ 391 (400-1½)				
LNAV/VNAV DA	2528-1¾ 463 (500-1¾)				
LNAV MDA	2660-1 595 (600-1)		2660-1¾ 595 (600-1¾)		
CIRCLING	2860-1 773 (800-1)		2860-2¼ 773 (800-2¼)		3080-3 993 (1000-3)



NE-3, 10 JUL 2025 to 07 AUG 2025

NE-3, 10 JUL 2025 to 07 AUG 2025