

WAAS CH 70604 W07A	APP CRS 069°	Rwy Ldg TDZE Apt Elev 5101 1318 1318
--	------------------------	--

RNAV (GPS) RWY 7

MERRILL MUNI (RRL)

RNP APCH - GPS.

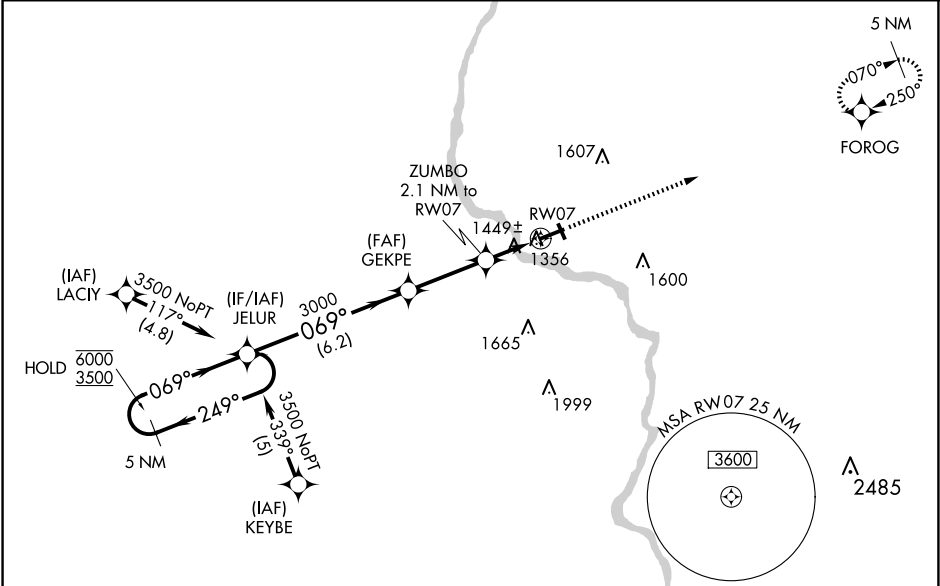
▼

⚠

Circling Rwy 16, 34 NA at night. Rwy 7 helicopter visibility reduction below $\frac{3}{4}$ SM NA.
For uncompensated Baro-VNAV systems, LNAV/VNAV NA below -17°C or above 54°C.

MISSED APPROACH:
Climb to 3500 direct
FOROG and hold.

AWOS-3 119.925	MINNEAPOLIS CENTER 124.4 317.7	UNICOM 122.8 (CTAF) 0
--------------------------	--	--



ELEV 1318

TDZE 1318

5 NM Holding Pattern

VGSI and RNAV glidepath not coincident (VGSI Angle 3.00/TCH 40).

3500 FOROG

GP 3.00° TCH 40

6.2 NM 3 NM 1 NM 1.1 NM

CATEGORY	A	B	C	D
LPV DA	1635-1	317 (400-1)		NA
LNAV/VNAV DA	1754-1¼	436 (500-1¼)		NA
LNAV MDA	1700-1	382 (400-1)	1700-1⅛ 382 (400-1⅛)	NA
CIRCLING	1760-1 442 (500-1)	1780-1 462 (500-1)	1920-1¾ 602 (700-1¾)	NA

REIL Rwy 7 and 25 **0**

MIRL Rwy 16-34 and 7-25 **0**