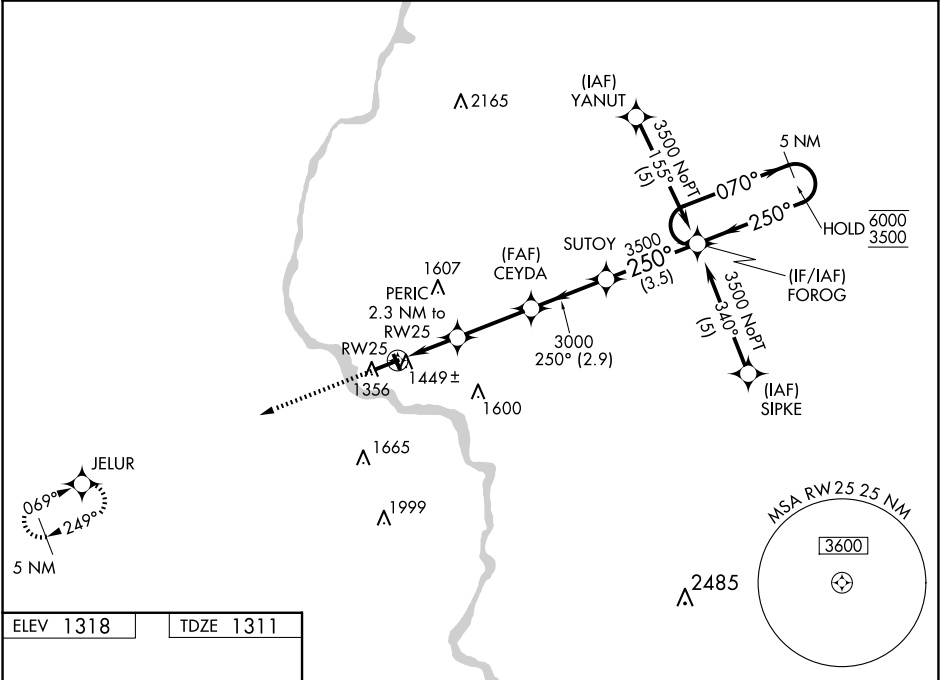


WAAS CH 49104 W25A	APP CRS 250°	Rwy Ldg TDZE 1311 Apt Elev 1318
--	------------------------	---

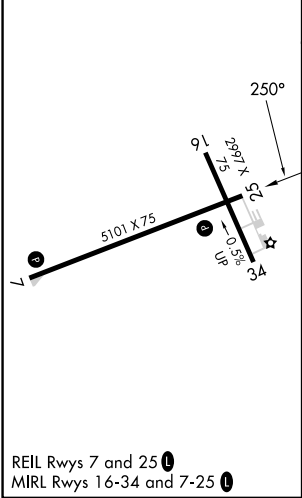
RNAV (GPS) RWY 25
MERRILL MUNI (RRL)

RNP APCH - GPS.	MISSED APPROACH: Climb to 3500 direct JELUR and hold.
Circling Rwy 16, 34 NA at night. Rwy 25 helicopter visibility reduction below ¾ SM NA. For uncompensated Baro-VNAV systems, LNAV/VNAV NA below -17°C or above 54°C.	

AWOS-3 119.925	MINNEAPOLIS CENTER 124.4 317.7	UNICOM 122.8 (CTAF) 1
--------------------------	--	---------------------------------



ELEV 1318	TDZE 1311
------------------	------------------



3500 JELUR				
SUTOY FOROG 5 NM Holding Pattern				
PERIC 2.3 NM to RW25 CEYDA 3000				
RW25 1.1 NM to RW25 2060 3000				
1.1 NM 1.2 NM 2.8 NM 2.9 NM 3.5 NM				
CATEGORY	A	B	C	D
LPV DA	1640-1	329 (400-1)		NA
LNAV/VNAV DA	1719-1½	408 (500-1½)		NA
LNAV MDA	1700-1	389 (400-1)	1700-1½ 389 (400-1½)	NA
CIRCLING	1760-1 442 (500-1)	1780-1 462 (500-1)	1920-1¾ 602 (700-1¾)	NA

EC-3, 10 JUL 2025 to 07 AUG 2025

EC-3, 10 JUL 2025 to 07 AUG 2025