

APP CRS	Rwy Idg	5005
058°	TDZE	9
	Apt Elev	9

RNAV (GPS) RWY 6

HARRY P WILLIAMS MEML (PTN)

RNP APCH.

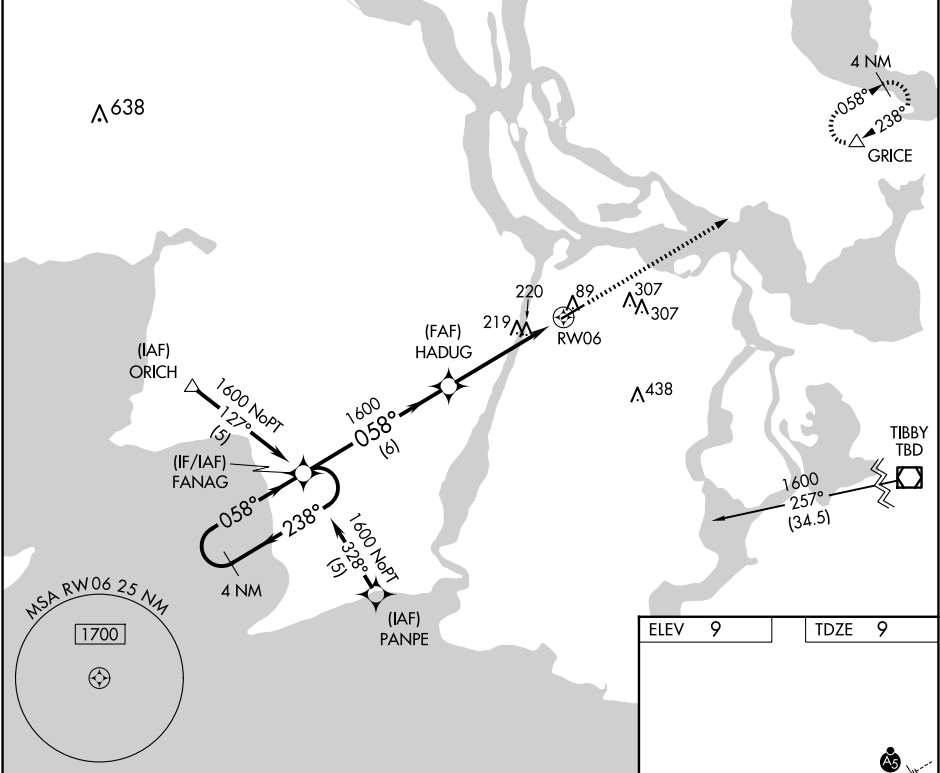
▼

▲

Circling NA to Rwy 4W and 22W. Rwy 6 helicopter visibility reduction below 1 SM NA. When local altimeter setting not received, use New Iberia altimeter setting and increase all MDA 100 feet; increase LNAV Cat C visibility ¼ SM and Circling Cat C visibility ½ SM. When VGSI inop, Straight-in/Circling Rwy 6 procedure NA at night.

MISSED APPROACH: Climb to 1700 direct GRICE and hold.

AWOS-3PT 134.575	NEW ORLEANS APP CON 124.3 350.35	CINC DEL 124.3	UNICOM 122.8 (CTAF) 0
---------------------	-------------------------------------	-------------------	--------------------------



4 NM Holding Pattern

VGSI and descent angles not coincident (VGSI Angle 3.00/TCH 50).

1700

GRICE

FANAG

HADUG

RW06

1600

238°

058°

1600

3.03°

TCH 45

6 NM

4.8 NM

CATEGORY	A	B	C	D
LNAV MDA	540-1	531 (600-1)	540-1½ 531 (600-1½)	NA
CIRCLING	540-1 531 (600-1)	660-1 651 (700-1)	660-1¾ 651 (700-1¾)	NA

ELEV 9 TDZE 9

5399 X 150

4500 X 100

058° to RWY06

REIL Rwy 6
MIRL Rwy 6-24 0