

WAAS CH 40320 W24A	APP CRS 238°	Rwy Idg TDZE Apt Elev	5399 9 9
--	------------------------	-----------------------------	-------------------------------------

RNAV (GPS) RWY 24

HARRY P WILLIAMS MEML (PTN)

RNP APCH.

▼

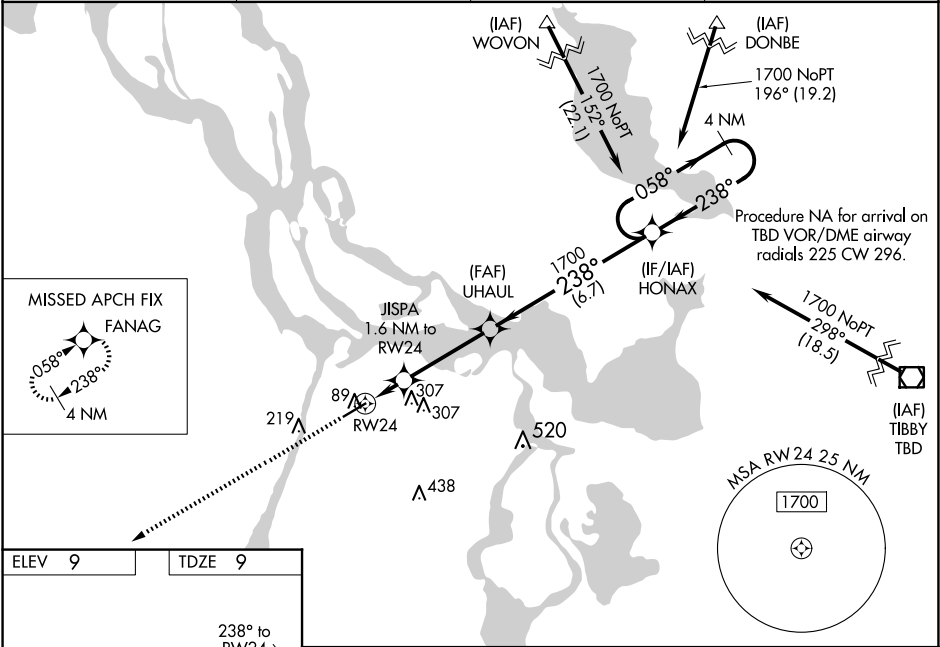
▲

For uncompensated Baro-VNAV systems, LNAV/VNAV NA below -15°C or above 54°C. Circling NA to Rwy 4W and 22W. Baro-VNAV and VDP NA when using New Iberia altimeter setting. When local altimeter setting not received, use New Iberia altimeter setting: increase LPV DA to 291 feet; increase LNAV/VNAV DA to 341 feet and visibility all Cats ½ SM; increase all MDAs 100 feet and LNAV Cat C visibility ½ SM and Circling Cat C visibility ½ SM. For inop MALSR, increase LNAV Cat C visibility to 1 mile. For inop MALSR, when using New Iberia altimeter setting, increase LPV all Cats visibility to ¾ mile, LNAV/VNAV all Cats visibility to 1 ½ mile, and LNAV Cat C visibility to 1 ¾ mile. When VGSI inop, Circling Rwy 6 NA at night.

MALSR

MISSED APPROACH: Climb to 2000 direct FANAG and hold.

AWOS-3PT 134.575	NEW ORLEANS APP CON 124.3 350.35	CLNC DEL 124.3	UNICOM 122.8 (CTAF)
----------------------------	--	--------------------------	-------------------------------



ELEV **9** TDZE **9**

REIL Rwy 6
MIRL Rwy 6-24

2000 FANAG		UHAUL 1700		HONAX 4 NM Holding Pattern	
* LNAV only		JISPA 1.6 NM to RW24		238° 058° 1700	
RW24		* 1.1 NM to RW24		GP 3.00° TCH 50	
1.1 NM		0.5		3.6 NM	
0.5		3.6 NM		6.7 NM	
CATEGORY	A	B	C	D	
LPV DA	209-½	200 (200-½)		NA	
LNAV/VNAV DA	259-½	250 (300-½)		NA	
LNAV MDA	400-½	391 (400-½)	400-5/8 391 (400-5/8)	NA	
CIRCLING	520-1 511 (600-1)	660-1 651 (700-1)	660-1 ¾ 651 (700-1 ¾)	NA	