

WAAS
CH **82107**
W28A

APP CRS
283°

Rwy Idg
TDZE
5813
Apt Elev
5885

RNAV (GPS) RWY 28
CENTENNIAL (APA)

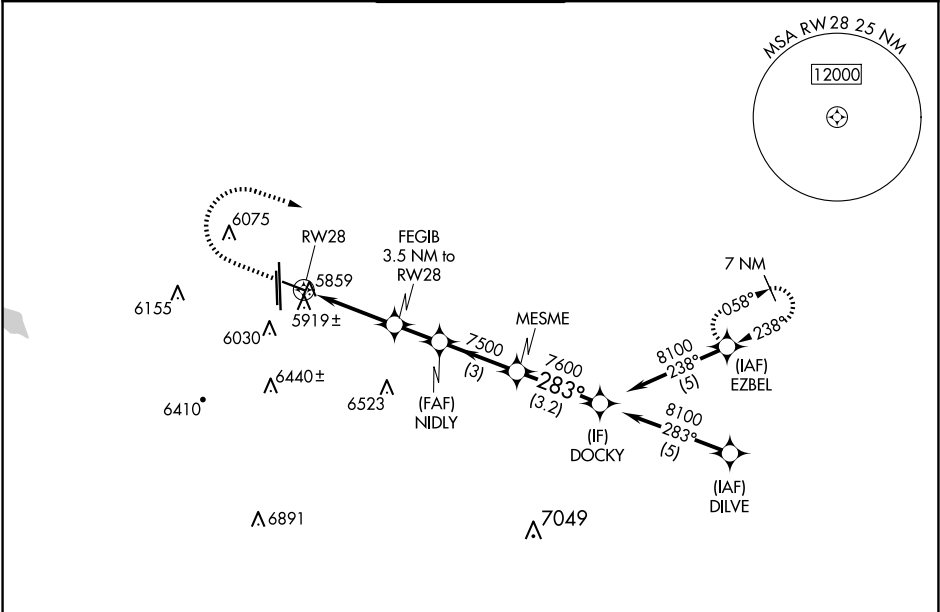
RNP APCH.

▼

For uncompensated Baro-VNAV systems, LNAV/VNAV NA below -26°C or above 49°C. Rwy 28 helicopter visibility reduction below ¾ SM NA. Circling Rwy 35L NA at night.

MISSED APPROACH: Climb to 6400 then climbing right turn to 9000 direct EZBEL and hold.

| | | | | |
|----------------------|---------------------------------------|----------------------------------|-------------------------|--------------------------|
| ATIS 120.3 | DENVER APP CON 132.75 269.3 | CENTENNIAL TOWER 118.9 | GND CON 121.8 | CLNC DEL 128.6 |
|----------------------|---------------------------------------|----------------------------------|-------------------------|--------------------------|



ELEV **5885**

TDZE **5813**

6400

9000

EZBEL

*LNAV only.

RWY 28

FEGIB
3.5 NM to RWY 28

NIDLY
7500

MESME
7600

DOCKY
8100

1.3

2.2 NM

1.7 NM

3 NM

3.2 NM

GP 3.00°
TCH 41

| CATEGORY | A | B | C | D |
|--------------|------------------------|-----------------------|-----------------------------|-------------------------|
| LPV DA | 6079-7/8 266 (200-7/8) | | | |
| LNAV/VNAV DA | 6119-1 306 (300-1) | | | |
| LNAV MDA | 6260-1 447 (400-1) | | 6260-13/8 447 (400-13/8) | |
| CIRCLING | 6400-1 515 (600-1) | 6540-1 655 (700-1) | 6740-21/2 855 (900-21/2) | 6900-3 1015 (1100-3) |

MIRL all Rwys
REIL Rwy 17R, 28, and 35L

72

4800 X 75

0.7% UP

0.6% UP

0.8% DOWN

35L

35R

5993

283°

DENVER, COLORADO

Amtd 1C 08NOV18

39°34'N-104°51'W

CENTENNIAL (APA)

RNAV (GPS) RWY 28