

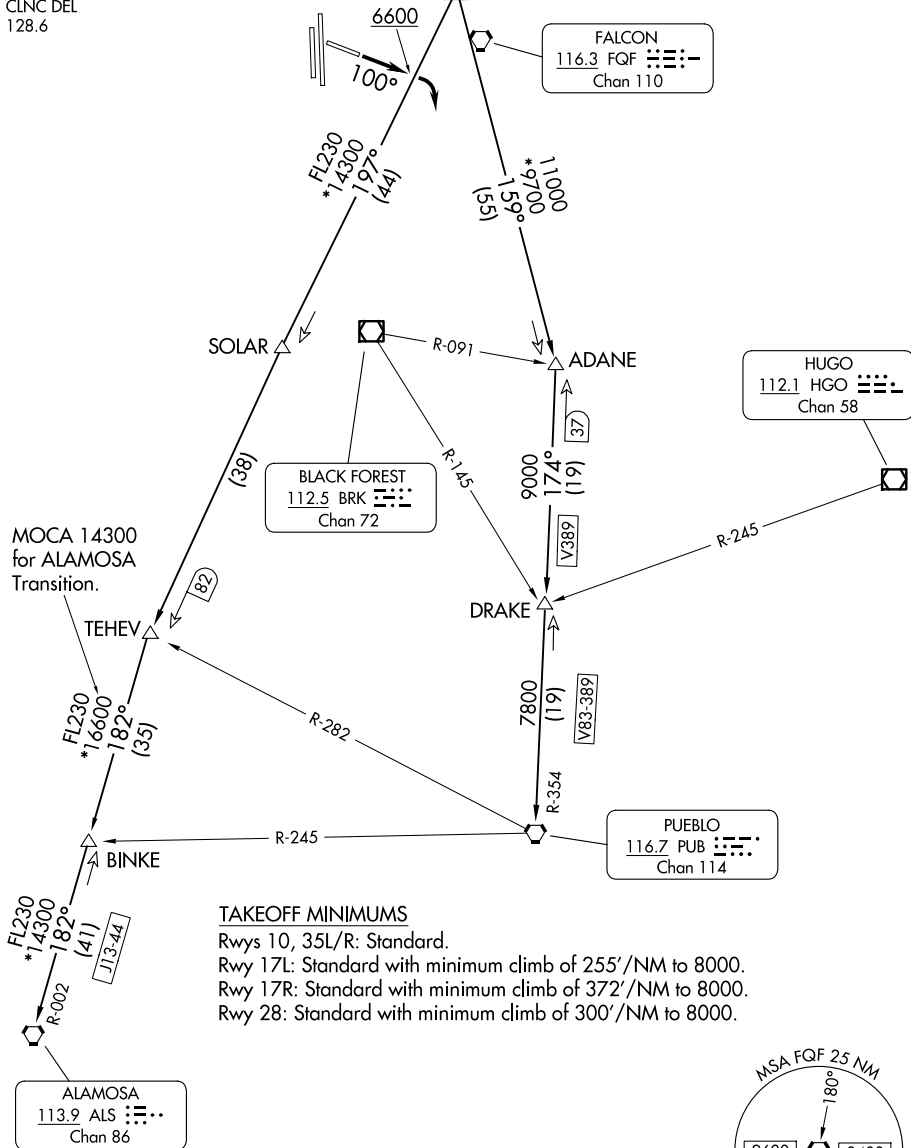
DENVER DEP CON
132.75 269.3
ATIS
120.3
CLNC DEL
128.6

RADAR required.

DENVER
117.9 DEN ::
Chan 126

**TOP ALTITUDE:
ASSIGNED BY ATC**

FALCON
3 FQF $\begin{smallmatrix} \cdot\cdot & \equiv & \cdot \\ \cdot\cdot & \equiv & \cdot \\ \cdot\cdot & \equiv & \cdot \end{smallmatrix} -$
Chan 110



NOTE: Chart not to scale.

(CONTINUED ON FOLLOWING PAGE)

