

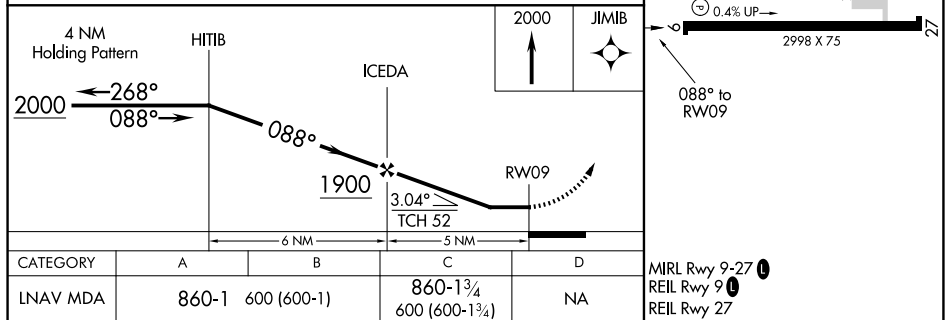
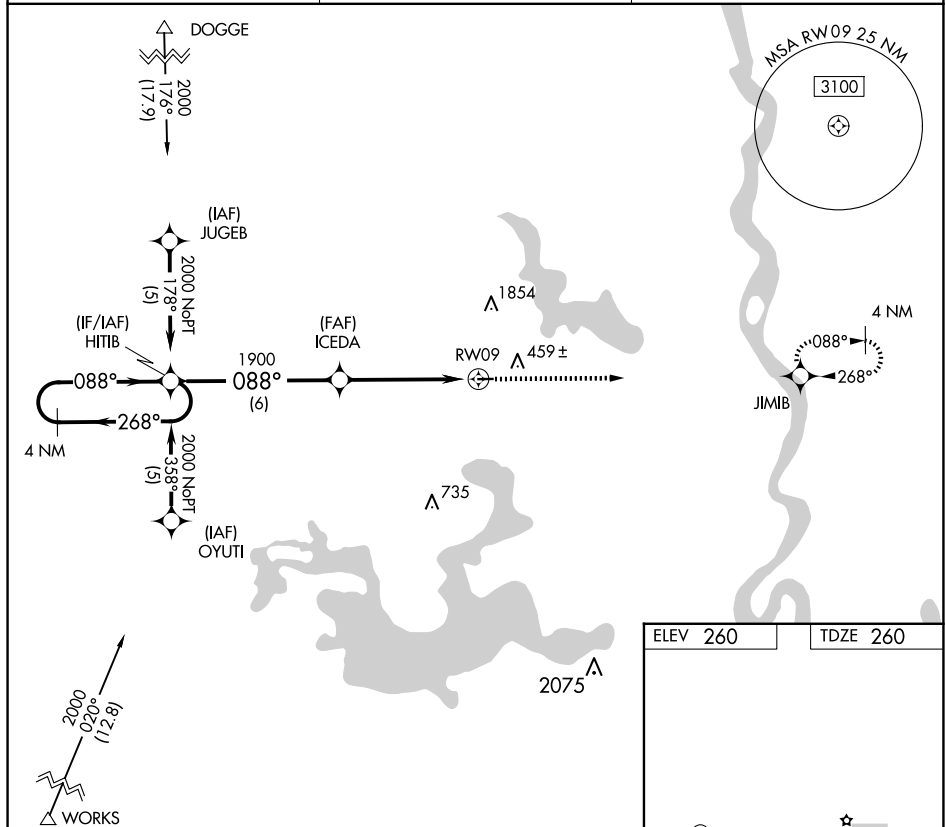
20030

RNAV (GPS) RWY 9
VIVIAN (3F4)

| | |
|-----------|---|
| T | Use Shreveport Rgnl altimeter setting; when not received, use |
| NA | Shreveport Downtown altimeter setting. Procedure NA at night. Rwy 9 helicopter visibility reduction below 1 SM NA. |

MISSED APPROACH: Climb to 2000 direct JIMB and hold.

| | | |
|---|-----------------------|---------------------------------|
| SHREVEPORT APP CON 119.9 335.55 | GCO 135,075 | UNICOM 122.8 (CTAF) 1 |
|---|-----------------------|---------------------------------|



VIVIAN (3F4)
RNAV (GPS) RWY 9

SC-4, 10 JUL 2025 to 07 AUG 2025

SC-4, 10 JUL 2025 to 07 AUG 2025