

23362

RNAV (GPS) RWY 33
SHELDON RGNL (SHL)

MISSED APPROACH: Climb to 4000 direct RINOC and hold.

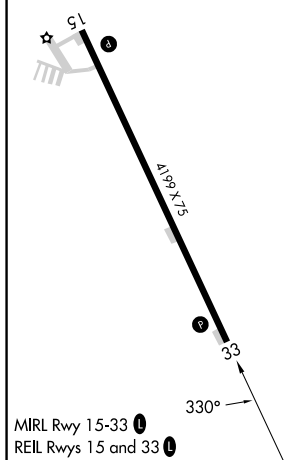


Diagram illustrating a 4 NM Holding Pattern for RW33. The pattern is defined by the following parameters:

- Fixes and Distances:**
 - YEPUL: 1.8 NM to RW33
 - ZOLUS: 3000
 - TUDUC: 3000
- Pattern Dimensions and Turns:**
 - 1.1 NM turn (330°)
 - 0.7 NM turn (330°)
 - 3.1 NM turn (330°)
 - 6 NM turn (330°)
- Holding Pattern:**
 - 4 NM Holding Pattern
 - 151° turn
 - 331° turn
- GP 3.00° TCH 44**

SHELDON RGNL (SHL)
RNAV (GPS) RWY 33

NC-3, 10 JUL 2025 to 07 AUG 2025