

WAAS CH 57918 W05A	APP CRS 049°	Rwy Idg TDZE 191 Apt Elev 195
--	------------------------	---

RNAV (GPS) RWY 5

ORANGEBURG MUNI (OGB)

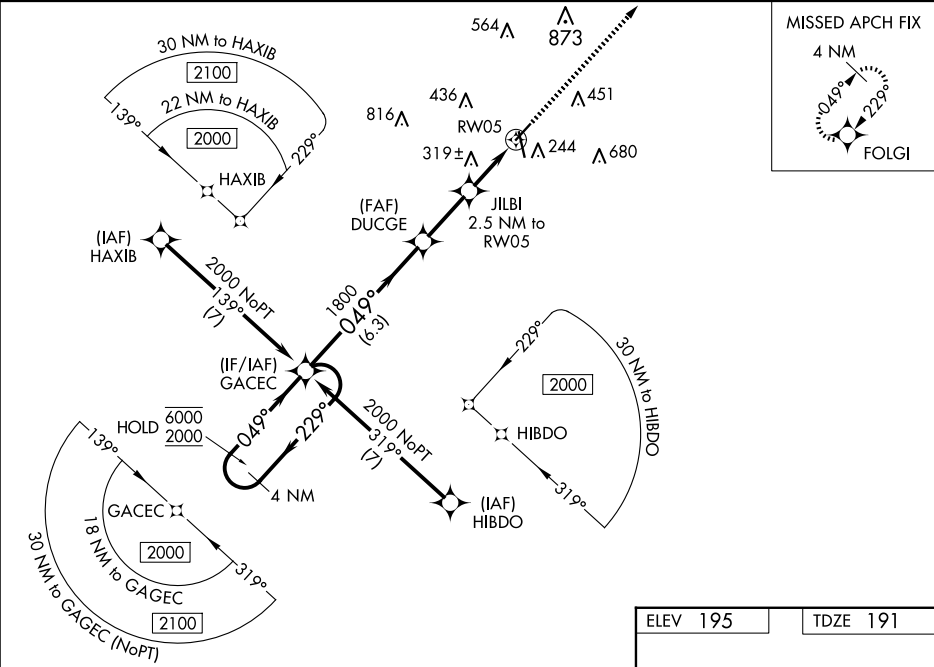
RNP APCH - GPS.

⚠

Circling Rwy 17 NA at night. Baro-VNAV and VDP NA when using Columbia Metro altimeter setting. Rwy 5 helicopter visibility reduction below ¾ SM NA. For uncompensated Baro-VNAV systems, LNAV/VNAV NA below -4°C or above 54°C. When local altimeter setting not received, use Columbia Metro altimeter setting: increase LPV DA to 542 feet; increase LNAV/VNAV DA to 520 feet; increase all MDA's 80 feet and visibility Cats C and D ¼ SM.

MISSED APPROACH:
Climb to 2000 direct
FOLGI and hold.

ASOS 118.525	COLUMBIA APP CON 124.15 338.2	GCO 125.675	UNICOM 122.7 (CTAF) 0
------------------------	---	-----------------------	---------------------------------



4 NM Holding Pattern		VGSI and RNAV glidepath not coincident (VGSI Angle 3.00/TCH 21).		2000	FOLGI
6000 ← 229°		GAGEC		↑	⬠
2000 → 049°		DUCGE		1800	JILBI
GP 3.00°		1800		2.5 NM to RW05	1.2 NM to RW05
TCH 55		1020		RW05	
		6.3 NM		2.5 NM	1.3
				1.2	
CATEGORY	A	B	C	D	
LPV DA		463-1	272 (300-1)		
LNAV/VNAV DA		441-1	250 (300-1)		
LNAV MDA	580-1	389 (400-1)	580-1½	389 (400-1½)	
CIRCLING	680-1 485 (500-1)	740-1 545 (600-1)	980-2¼ 785 (800-2¼)	980-2½ 785 (800-2½)	

