

WAAS CH 97418	APP CRS 354°	Rwy Idg TDZE 186	5399
W35A		Apt Elev 195	

RNAV (GPS) RWY 35

ORANGEBURG MUNI (OGB)

RNP APCH - GPS.

⚠

Circling Rwy 17 NA at night. Baro-VNAV and VDP NA when using Columbia Metro altimeter setting. For uncompensated Baro-VNAV systems, LNAV/VNAV NA below -4°C or above 54°C. Inop table does not apply to LPV. For inop ALS, increase LNAV/VNAV Cat A/B visibility to ½ SM and LNAV Cat C/D visibility to 1½ SM. When local altimeter setting not received, use Columbia Metro altimeter setting: increase LPV DA to 515 feet and all visibilities ½ SM; increase LNAV/VNAV DA to 559 feet and all visibilities ¼ SM; increase all MDAs 80 feet and visibility Cats C and D ¼ SM. For inop ALS when using Columbia Metro altimeter setting, increase LPV and LNAV/VNAV Cat A/B visibility to 1 SM.

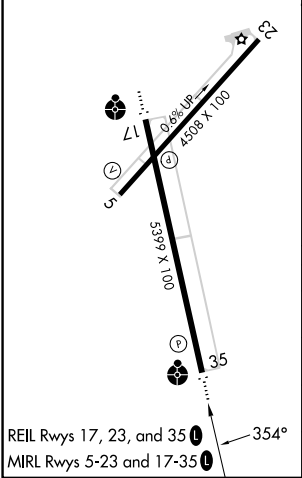
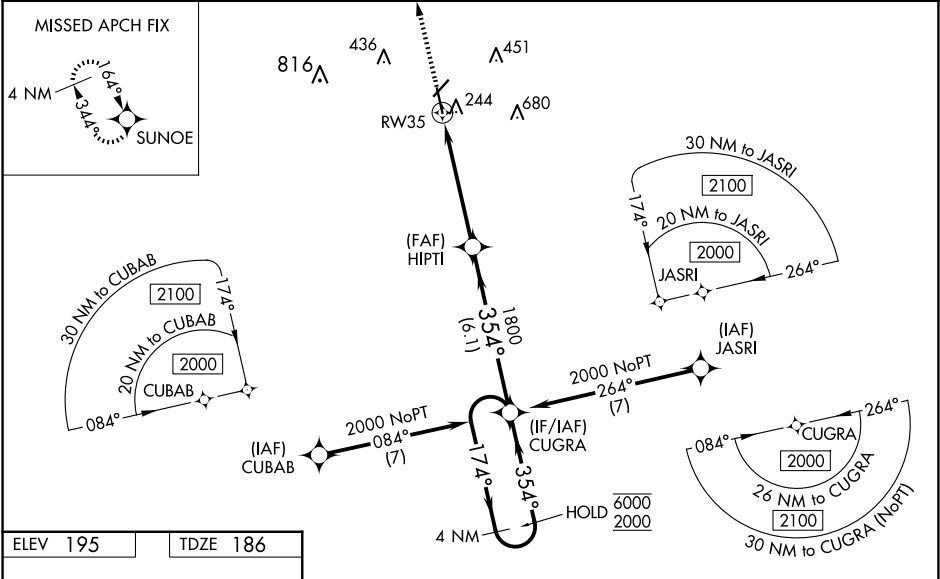
ODALS

⬆

⋮

MISSED APPROACH:
Climb to 2000 direct
SUNOE and hold.

ASOS 118.525	COLUMBIA APP CON 124.15 338.2	GCO 125.675	UNICOM 122.7 (CTAF) 0
------------------------	---	-----------------------	---------------------------------



2000	SUNOE	VGSI and RNAV glidepath not coincident (VGSI Angle 3.00/TCH 37).		4 NM
		CUGRA		Holding Pattern
		1.3 NM to RW35	1800	1800
		1.3	3.6 NM	6.1 NM
CATEGORY	A	B	C	D
LPV DA	436-¾	250 (300-¾)		
LNAV/VNAV DA	480-¾	294 (300-¾)		
LNAV MDA	640-¾	454 (500-¾)	640-1⅛	454 (500-1⅛)
CIRCLING	680-1 485 (500-1)	740-1 545 (600-1)	980-2¼ 785 (800-2¼)	980-2½ 785 (800-2½)