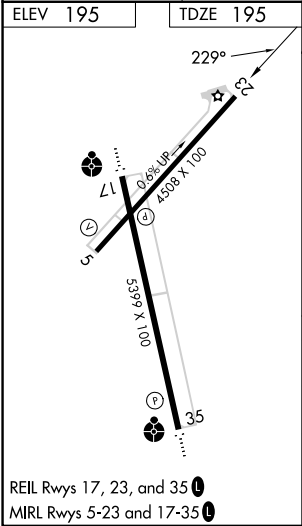
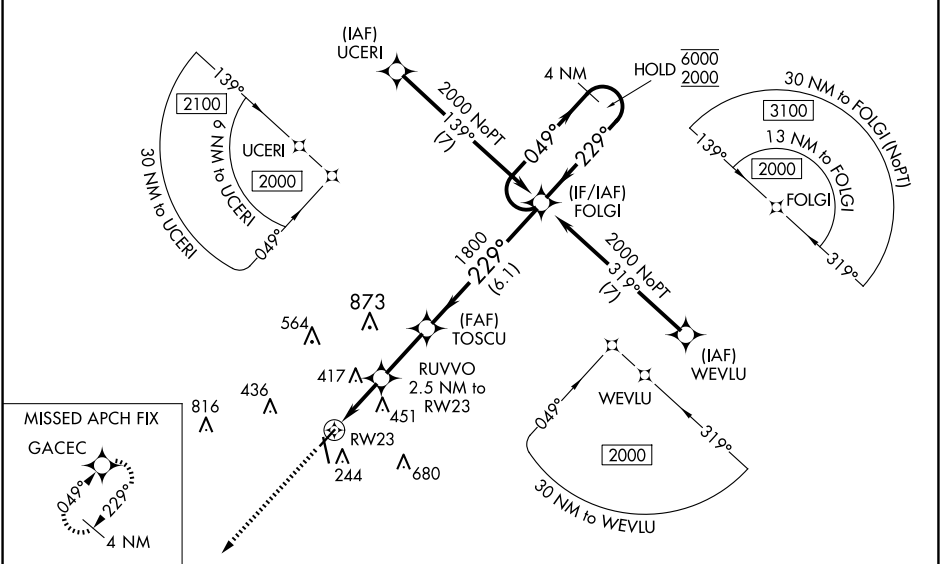


WAAS CH 99318	APP CRS 229°	Rwy Idg 4508 TDZE 195 Apt Elev 195
W23A		

RNAV (GPS) RWY 23

ORANGEBURG MUNI (OGB)

RNP APCH-GPS. <div><div></div><div>Circling Rwy 17 NA at night. Baro-VNAV and VDP NA when using Columbia Metro altimeter setting. For uncompensated Baro-VNAV systems, LNAV/VNAV NA below -4°C or above 54°C. When local altimeter setting not received, use Columbia Metro altimeter setting: increase LPV DA to 538 feet and all visibilities ¼ SM; increase LNAV/VNAV DA to 740 feet and all visibilities ¼ SM; increase all MDAs 80 feet and visibility Cats C and D ¼ SM.</div></div>		MISSED APPROACH: Climb to 2000 direct GACEC and hold.	
ASOS 118.525	COLUMBIA APP CON 124.15 338.2	GCO 125.675	UNICOM 122.7 (CTAF) 0



ELEV 195	TDZE 195
<div><div>2000</div><div>GACEC</div></div>	
<div><div><div>RW23</div><div>1.3 NM to RW23</div><div>1.2 NM</div><div>2.5 NM to RW23</div><div>6.1 NM</div></div><div><div>TOSCU</div><div>1800</div><div>229°</div><div>1020</div><div>1800</div></div><div><div>FOLGI</div><div>4 NM Holding Pattern</div><div>049° → 6000</div><div>← 229° 2000</div><div>GP 3.00°</div><div>TCH 40</div></div></div>	
CATEGORY	A B C D
LPV DA	459-7⁄8 264 (300-7⁄8)
LNAV/VNAV DA	660-1³⁄⁸ 465 (500-1³⁄⁸)
LNAV MDA	660-1 465 (500-1) 660-1³⁄⁸ 465 (500-1³⁄⁸)
CIRCLING	680-1 485 (500-1) 740-1 545 (600-1) 980-2¼ 785 (800-2¼) 980-2½ 785 (800-2½)