

WAAS CH <b>45708</b> <b>W03A</b>	APP CRS <b>035°</b>	Rwy Idg <b>5000</b> TDZE <b>812</b> Apt Elev <b>819</b>
--	------------------------	---

RNAV (GPS) Z RWY 3

MADISON MUNI (IMS)

⚠

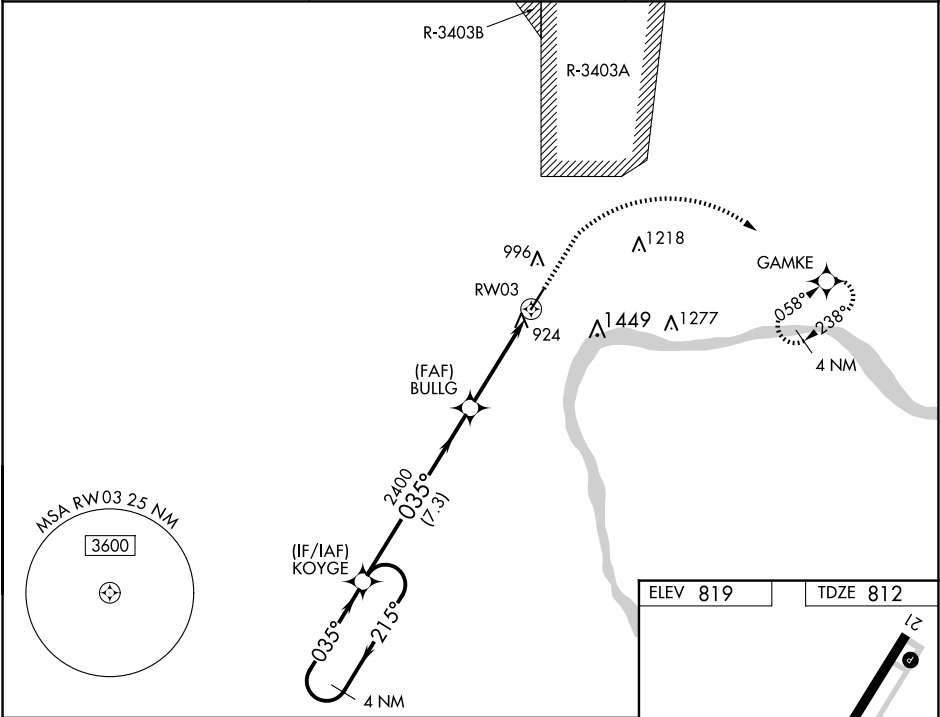
⚠NA

For uncompensated Baro-VNAV systems, LNAV/VNAV NA below -16°C (4°F) or above 54°C (130°F). DME/DME RNP-0.3 NA. Rwy 3 helicopter visibility reduction below ¾ SM NA. For inoperative ALS, increase \*\*LNAV/VNAV all Cats visibility to ¾ SM. For inoperative ALS when using Bowman Field altimeter setting, increase LPV all Cats visibility to 1¾ SM; increase \*\*LNAV/VNAV all Cats visibility to ¾ SM and LNAV/VNAV all Cats visibility to 2½ SM.

MALSF

MISSED APPROACH: Climb to 1300 then climbing right turn to 4000 direct GAMKE and hold, continue climb-in-hold to 4000. \*\*Missed approach requires minimum climb of 410 feet per NM to 1900.

AWOS-3 <b>119.175</b>	LOUISVILLE APP CON <b>132.075 327.0</b>	UNICOM <b>123.0 (CTAF) 0</b>
--------------------------	--	---------------------------------



4 NM Holding Pattern

GP 3.50° TCH 42

1300

4000

GAMKE

CATEGORY	A	B	C	D
LPV DA	1142-¾	330 (400-¾)		NA
LNAV/VNAV DA**	1095-¾	283 (300-¾)		NA
LNAV/VNAV DA	1420-1½	608 (700-1½)		NA

HIRL Rwy 3-21 0  
REIL Rwy 21 0

EC-2, 10 JUL 2025 to 07 AUG 2025

EC-2, 10 JUL 2025 to 07 AUG 2025