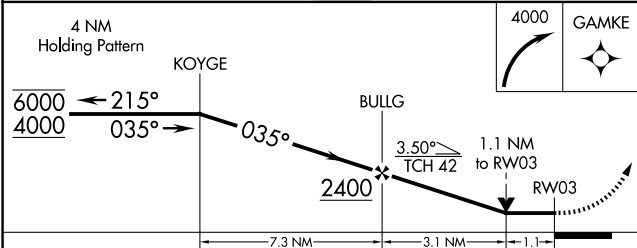
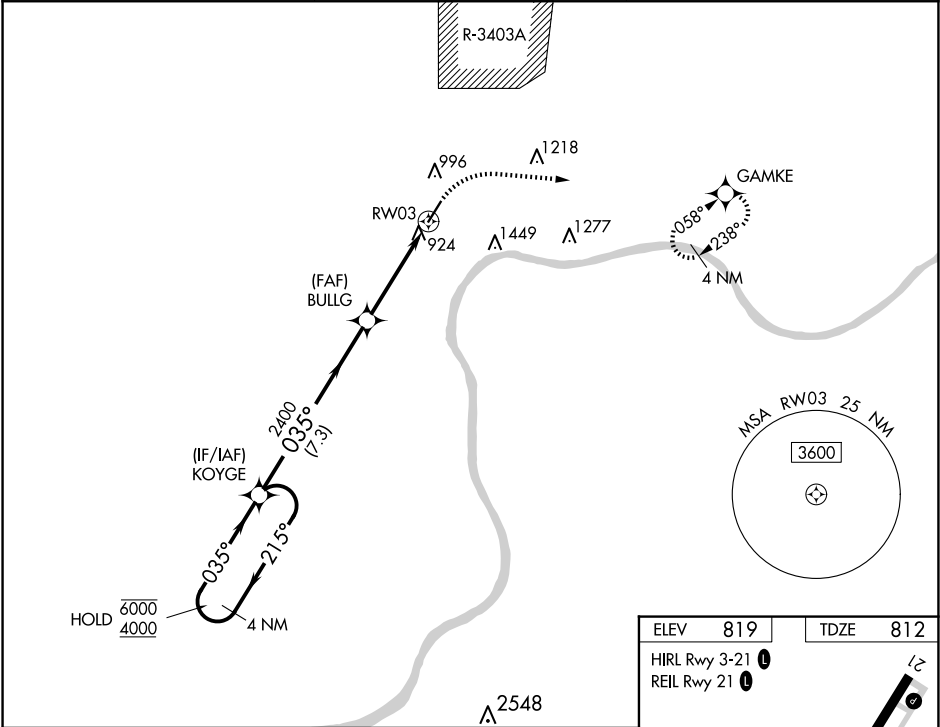


APP CRS	Rwy ldg	5000
035°	TDZE	812
	Apt Elev	819

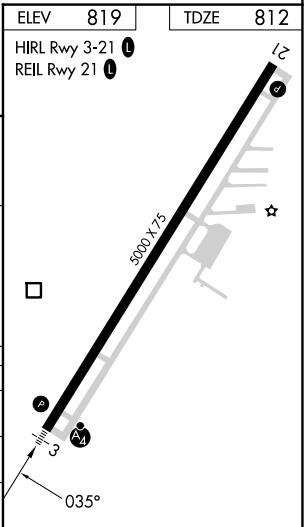
RNAV (GPS) Y RWY 3  
MADISON MUNI (IMS)

RNP APCH - GPS.	MALSF	MISSED APPROACH: Climbing right turn to 4000 direct GAMKE and hold, continue climb-in-hold to 4000. **Missed approach requires minimum climb of 410 feet per NM to 1900.
<div><div>▼</div><div>⚠</div></div> <div>Circling NA for Cat C east of Rwy 3-21. Rwy 3 helicopter visibility reduction below ¾ SM NA. For inop ALS increase **LNAV Cat C visibility to 1 ¾ SM.</div>	<div><div>⚡</div><div>⚡</div></div>	

AWOS-3 119.175	LOUISVILLE APP CON 132.075 327.0	UNICOM 123.0 (CTAF) 0
-------------------	-------------------------------------	--------------------------



CATEGORY	A	B	C	D
LNAV MDA**	1260-¾	448 (500-¾)	1260-1 448 (500-1)	NA
LNAV MDA	1420-¾	608 (700-¾)	1420-1½ 608 (700-1½)	NA
CIRCLING	1420-1	601 (700-1)	1420-1¾ 601 (700-1¾)	NA



EC-2, 10 JUL 2025 to 07 AUG 2025

EC-2, 10 JUL 2025 to 07 AUG 2025