

VOR/DME	PUT	Rwy Idg	N/A
117.4	APP CRS	TDZE	N/A
Chan 121	211°	Apt Elev	238

VOR-A

DANIELSON (LZD)

NA

When local altimeter setting not received, use Willimantic altimeter setting and increase SNAPO fix minimums Cat B MDA 40 feet.
Procedure NA at night. Helicopter visibility reduction below 1 SM NA.

MISSED APPROACH:

Climbing right turn to 2600 direct PUT VOR/DME and hold.

AWOS-3 119.125	UD ASOS 133.675	PROVIDENCE APP CON ★ 123.675 244.875	UNICOM 123.0 (CTAF) 0
-------------------	--------------------	-----------------------------------------	--------------------------

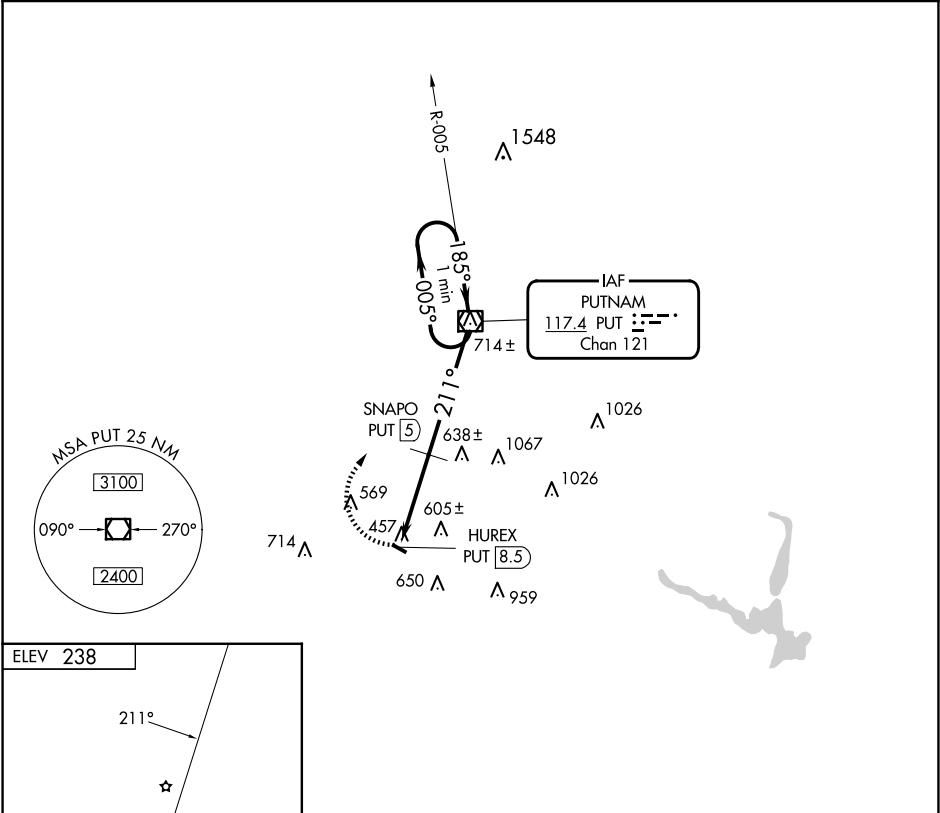


Diagram of runway 31 showing dimensions 2700 X 75 and a 31 degree angle.

REIL Rwy 31
MIRL Rwy 13-31

FAF to MAP 8.5 NM					
Knots	60	90	120	150	180
Min:Sec	8:30	5:40	4:15	3:24	2:50

Diagram of the SNAPO FIX MINIMUMS showing various flight paths, altitudes, and distances.

Diagram details:

- 2600 PUT (with a square symbol)
- HUREX PUT 8.5 (with a dotted line)
- SNAPO PUT 5 (with a vertical dashed line)
- 211° (angle between HUREX and SNAPO)
- 1120 (altitude between HUREX and SNAPO)
- 3.5 NM (distance between HUREX and SNAPO)
- 5 NM (distance between SNAPO and 2600)
- 2600 (altitude at the end of the 5 NM segment)
- 005° (angle between SNAPO and 2600)
- 185° (angle between SNAPO and 2600)
- One Minute Holding Pattern (text near 2600)

CATEGORY	A	B	C	D
CIRCLING	1120-1¼	882 (900-1¼)	NA	
SNAPO FIX MINIMUMS				
CIRCLING	900-1 662 (700-1)	1080-1¼ 842 (900-1¼)	NA	