

WAAS CH 40322 W21A	APP CRS 211°	Rwy Idg TDZE Apt Elev	5500 1270 1270
--	------------------------	-----------------------------	---

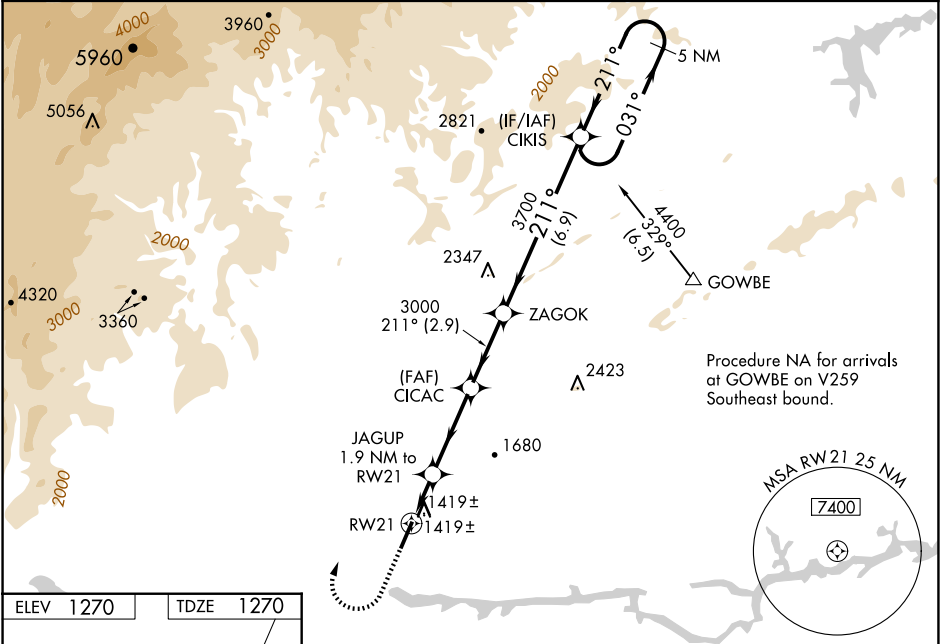
RNAV (GPS) RWY 21

FOOTHILLS RGNL (MRN)

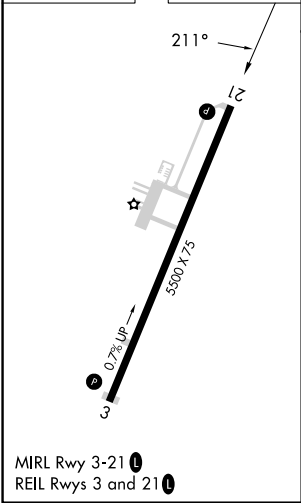
⚠ Baro-VNAV NA when using Hickory altimeter setting. For uncompensated Baro-VNAV systems, LNAV/VNAV NA below -17°C (2°F) or above 35°C (95°F). DME/DME RNP-0.3 NA. VDP NA with Hickory altimeter setting. When local altimeter not received use Hickory altimeter: increase LPV DA to 1562 feet, LNAV/VNAV DA to 1642 feet, and visibility LPV all Cats ¼ SM and LNAV/VNAV all Cats ½ SM; increase all MDA 60 feet and visibility LNAV Cats C and D and Circling Cat D ¼ SM.

MISSED APPROACH: Climb to 2000 then climbing right turn to 4400 direct CIKIS and hold.

AWOS-3P 124.175	ATLANTA CENTER 125.15 263.0	UNICOM 122.7 (CTAF) 0
---------------------------	---------------------------------------	---------------------------------



ELEV 1270	TDZE 1270
-----------	-----------



2000 ↑	4400 ↗	CIKIS ✦	VGSI and RNAV glidepath not coincident (VGSI Angle 3.50/TCH 48).				5 NM Holding Pattern
*LNAV only	JAGUP 1.9 NM to RW21	CIKAC 3000	ZAGOK	CIKIS	031° → ← 211° 4400		
	1 NM to RW21	1920	3000	3700	GP 3.00° TCH 45		