

APP CRS

055°

Rwy Idg

6000

TDZE

670

Apt Elev

681

RNAV (GPS) RWY 6

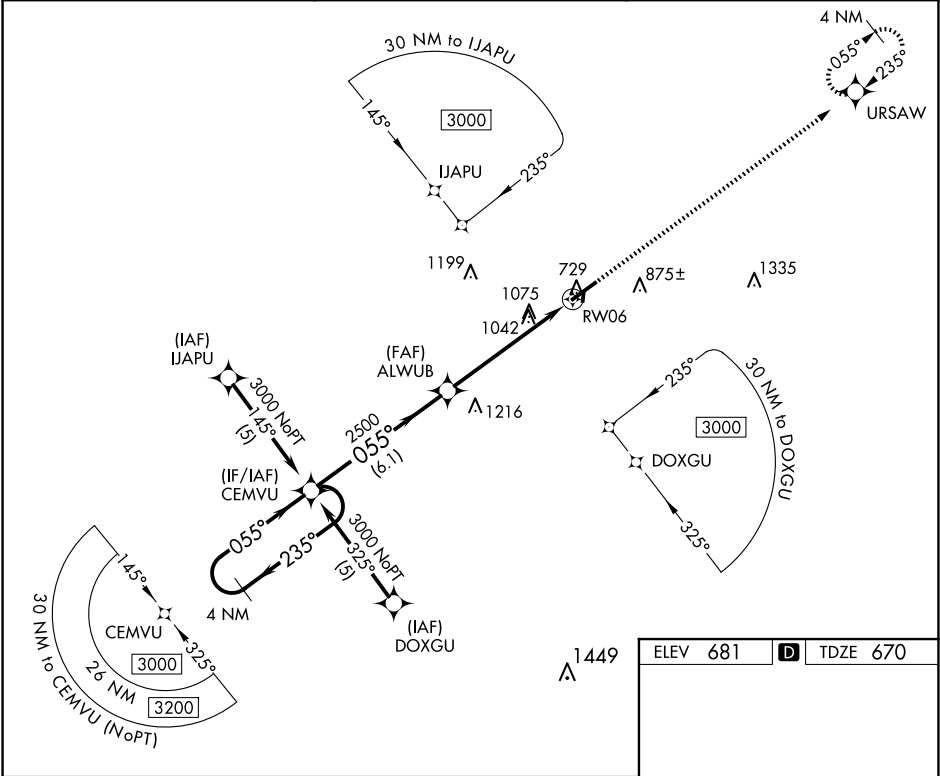
MAURY COUNTY RGNL (MRC)

DME/DME RNP-0.3 NA. Visibility reduction by helicopters NA. When local altimeter setting not received, use Nashville Intl altimeter setting; increase all MDA 120 feet and increase LNAV Cat B visibility ¼ SM, Cats C and D visibility ½ SM, increase Circling Cat C visibility ½ SM.

MISSED APPROACH:

Climb to 3000 direct URSAW and hold.

AWOS-3 128.625	MEMPHIS CENTER 125.85 379.25	UNICOM 122.8 (CTAF) 0
-------------------	---------------------------------	--------------------------



4 NM Holding Pattern

CEMVU

VGSI and descent angles not coincident (VGSI Angle 3.00/TCH 42).

3000

URSAW

3000

235°

055°

055°

2500

3.05°

TCH 40

6.1 NM

5.6 NM

RW06

ELEV 681

TDZE 670

MIRL Rwy 6-24

REIL Rwy 6

REIL Rwy 24

CATEGORY	A	B	C	D
LNAV MDA	1340-1	670 (700-1)	1340-1¾ 670 (700-1¾)	1340-2 670 (700-2)
CIRCLING	1340-1 659 (700-1)	1360-1 679 (700-1)	1380-2 699 (700-2)	1620-3 939 (1000-3)