

WAAS
CH **69515**
W24A

APP CRS
235°

Rwy Idg
TDZE **681**
Apt Elev **681**

RNAV (GPS) RWY 24

MAURY COUNTY RGNL (MRC)

RNP APCH.

▼

▲

Inop table does not apply to LNAV/VNAV Cats A, B, and C and LNAV Cat C. For uncompensated Baro-VNAV systems, LNAV/VNAV NA below -16°C or above 47°C. Rwy 24 helicopter visibility reduction below ¾ SM NA. When local altimeter setting not received, use Nashville Intl altimeter setting and increase LPV DA to 1090 feet and LNAV/VNAV DA to 1438 feet and increase all MDA 120 feet; increase LPV and LNAV/VNAV all Cats visibility ½ SM, and LNAV Cats C and D visibility ¼ SM, and increase Circling Cat C visibility ½ SM. Baro-VNAV and VDP NA when using Nashville Intl altimeter setting.

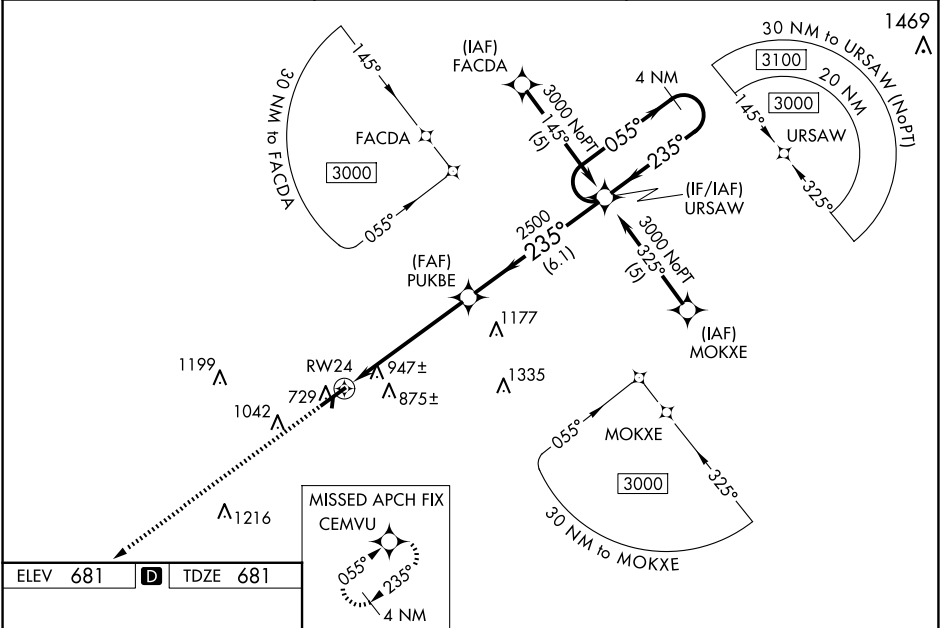
ODALS

●

⋮

MISSED APPROACH:
Climb to 3000 direct CEMVU and hold.

AWOS-3 128.625	MEMPHIS CENTER 125.85 379.25	UNICOM 122.8 (CTAF) ①
--------------------------	--	---------------------------------



ELEV **681** **D** TDZE **681**

3000

CEMVU

VGSI and RNAV glidepath not coincident (VGSI Angle 3.00/TCH 39).

4 NM Holding Pattern

*LNAV only.

PUKBE

RW24

2500

3000

GP 3.00° TCH 40

CATEGORY	A	B	C	D
LPV DA	981-1		300 (300-1)	
LNAV/VNAV DA	1329-2¼		648 (700-2¼)	
LNAV MDA	1220-¾	539 (600-¾)	1220-1½	1220-1¾
			539 (600-1½)	539 (600-1¾)
CIRCLING	1320-1	1360-1	1380-2	1620-3
	639 (700-1)	679 (700-1)	699 (700-2)	939 (1000-3)