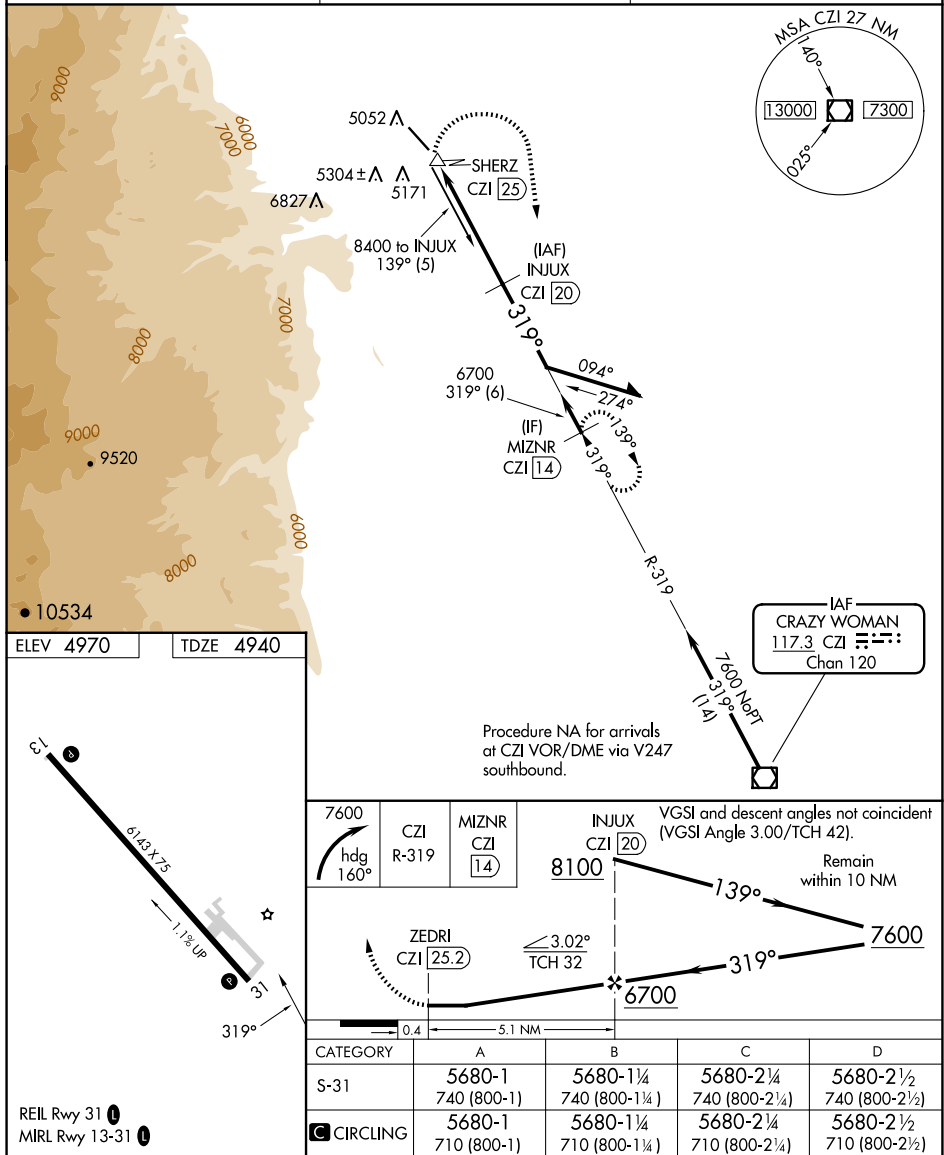


25163

VOR/DME RWY 31
JOHNSON COUNTY (BYG)

MISSED APPROACH: Climbing right turn to 7600 via heading 160° and CZI VOR/DME R-319 to MIZNR/14 DME and hold.

ASOS 135.425	SALT LAKE CENTER 127.75 351.9	UNICOM 122.8 (CTAF) 0
------------------------	---	---------------------------------



JOHNSON COUNTY (BYG)
VOR/DME RWY 31

NW-1, 10 JUL 2025 to 07 AUG 2025